

# ARMY MOTORS SUPPLEMENT

## INDEX TO VOLUME FOUR AND YEAR'S DIRECTIVES



# Index to Army Motors Volume Four

## GUIDE TO SUPPLEMENT

**T**his year your index has been expanded to include all Preventive Maintenance publications issued from April 1943 through March 1944. The list of directives, like the regular index, has been divided and sub-divided into "Class," "Individual Vehicle." You will find all FSMWO's, SNL's, TB's, TM's, etc., applying to 1st and 2nd-echelon responsibilities.

The regular index has been simplified, so finding the answer to your problems will be like shootin' fish in a barrel.

Any directives you do not have may be procured through regular channels (see chart).

*April*  
1 - 32  
*May*  
33 - 64  
*June*  
65 - 96  
*July*  
97 - 128  
*August*  
129 - 160  
*Sept. - Oct.*  
161 - 192  
*November*  
193 - 224



*December*  
225 - 252  
*January*  
253 - 284  
*February*  
285 - 316  
*March*  
317 - 348

1C Front Cover  
2C Inside Front Cover  
3C Inside Back Cover  
4C Back Cover

The number after "C" indicates the issue, therefore 3C2 means Inside Back Cover, May issue.

**ACCESSORY:** Item carried as part of vehicle operation, or security.

**EQUIPMENT:** Item carried for service to, or maintenance of another vehicle.

ARMY MOTORS is published monthly in the interest of organizational maintenance by the Preventive Maintenance Section, Maintenance Branch, Office, Chief of Ordnance-Detroit.

ARMY MOTORS is glad to get articles or illustrations, and to answer your questions. Just write to: ARMY MOTORS MAGAZINE, Office, Chief of Ordnance-Detroit, Detroit 32, Mich.

## WHEELED VEHICLES

### ACCESSORIES

Cold starting kit mod. Willys	39
Decontaminator inst.	311
Fuel can-mount, 2½-ton	89
Gas can bracket inst., 2½-ton	7
Gasoline can, mce. 5-gal.	153
General's flag	3C1
Overseas spare parts kits	76
Portable ramps imp.	288
Rear reflector mod.	6
Rifle bracket inst. ¼-ton	7
Seat protector imp., ¼-ton	88
Spare parts kit, 2½-ton	39
Special supply kits—proc.	3C1
Tire chains, mce. & storage	218
Tire gage mount.	20
Tool rack inst.	88
Tool roll sug.	7
Traction devices, inst.	303
Wheel block imp.	245
Windshield Bumper repl., ¼-ton	39

### ARMAMENT

Gun ring inst.	289
----------------	-----

### AUTOCAR

Cable inst.	70
Filter element repl.	71
Parts interchangeability	3C4

### AXLES (GENERAL)

Disengaging	37
Gear case rep.	58
Hub-bolt lock, mod.	246
Lubrication	330
Mce. GMC	345
Oil seal repair	278
Oil seal repl., 2½-ton	124
Trunnion bearing lub.	345
U-joint cork seals, mce.	156

### AXLE, FRONT

Air vent mce.	89
Differential oil seal	123
Disengaging	134
Int. mod.	346
Spring inst.	3C9
Spring stud servicing, 2½-ton	59
Torque field kit mod.	156
Tracta joint inst., 1¼-ton	4
Tracta joint, inst. int., ¼-ton	207
U-joint—GMC	263

### AXLE, REAR

Brake-line mod.	61
Constant-velocity joint lub., ¼-ton	23
Disengaging	134
Side gear backlash, 2½-ton	124

### BODY

Bow expansion-cargo bodies	88
Cab reinforcement—Ford, 1½-ton	39
Cowl strip, mod.	244
Fender reinforcement, 2½-ton	183
Front bumper mod., 2½-ton	155
Headlamp protection	324
Hood cushioning, ¼-ton	20
Hood safety catch, GMC & Chev.	119
Hood-side-panel caution	229
Panel mod., Dodge, ¼-ton	39
Pioneer racks inst.	88
Radiator grill cracks, GMC	309
Radiator mount. bolt insulators, int., Diamond T., Ford	246
Radiator vibration suppression	22
Rear reflection mod.	6
Rear panel mod., ¼-ton	3
Rear seat mce., ¼-ton	87

int.	interchangeability
irr.	irregularity
lub.	lubrication
mce.	maintenance
mech.	mechanic

Superstructure inst. wood body, 2½-ton	78
Weighting for traction	165
Window glass repl.	249
Windshield wiper mod.	344

### BRAKES

Adj., Dodge, ¼-ton	308
Air brake mce.	89
Air cleaner mce., 2½-ton	114
Bleeding adapter, GMC	342
Brake drum mce.	152, 216
Brake hose protector	120
Brakeline rep., imp.	18
Down grade caution	65
Downshifting	39
Drum, mce., 2½-ton	59
Drum mce., Chev.—GMC	154
Drum shield, sug.	154
Hand brake mce.	20
Hydraulic fluid, spec., chg. and proc.	203, 128
Hydrovac air cleaner, mce.	213
Hydrovac air hose mod.	134
Hydrovac bleeder valves, GMC & Ford	281
Hydrovac lub.	3C8, 186
Hydrovac—trouble shooting	166
Lower brake adj., Dodge	181
Pedal inst., ¼-ton	122
Pedal, int., Diamond T, Ford	246
Rear axle brake-line mod.	61
Squeaking—Dodge, ½-ton	123
Tee connection mod.	184
Vibration—Dodge, ¼-ton	278

### CHASSIS

Frame assy. dimensions cor., ¼-ton	165
Front spring mod., ¼-ton Dodge	7
Lub. fittings—mce.	68
Replacement, 2½-ton	293
Shock absorber inst. Chev.	133
Shock absorber mce.	117
Spring clips, ¼-ton	280
Spring inst.	3C9
Spring mce.	185
Spring seat bearing lub.	345
Spring rivet repl. & mod. Chev., 1½-ton	133
Staking nuts & bolts, M3A1	229
Welding structural parts	326

### CHEVROLET

B.O. Lights—proc., inst.	24
Bomb service SNL. G-85	3C3
Brake drum mod.	155
Conversion kit, availability	3C8
Differential oil seal inst.	123
Gas tank mod.	31
Heat Control valve adj.	36
Hood safety catch	119
Hydrovac—trouble shooting	166
Lock ring mod.	4
Gear shift, mod.	154
Shock absorber inst.	133
Spring rivet repl. & mod.	133
Throttle stud leakage	122
Tie-rod end mod.	37
Transfer case vent ass'y mod.	104
Wheel hub mod.	155

### CHRYSLER

B.O. Lights—proc. & inst.	24
---------------------------	----

### CLUTCH

Adj., Ford, M8	325
Pedal free play, 2½-ton	22, 69
Pedal inst., ¼-ton	122
Pressure plate return springs, repl., ¼-ton	214
Spring mce., 2½-ton	23

### COOLING SYSTEM

Anti-freeze—mixing	3C9
Anti-freeze reclamation	99
Anti-freeze reinhibitor, spec.	128
Crankcase vent. valve mod., 2½-ton	101
Crankcase vent. sys., Willys	39
Drive shaft pulley mod., Diamond T	184
Fan belt adj., 2½-ton	6
Fan blade shield Dodge, ¼-ton	20
Over-flow tank desert climate	85
Radiator core mce.	4C6
Radiator frame repl., 2½-ton	102
Radiator inlet breakage, ¼-ton	308
Radiator pressure cap mce., 2½-ton	101
Surge tank freezing	164
Waterpump bolt mod.	7

### CORBITT

B.O. Lights—proc. & inst.	24
---------------------------	----

### DIAMOND T

Battery cable mod.	7
B.O. Lights—proc. & inst.	24
Brake pedal, int	246
Drive shaft pulley mod.	184
Painting shafts, caution	102
Parts int.	3C4
Radiator parts int.	246
Spare parts kit	7
Spare tire storage	151
TM 10-1605 change	68
V-tow bar, mod.	151
Weighting for traction	165
Winch cable guides	151
Winch cable mod.	135
Winch cranking	154
Winch operation	134

### DOCTRINE

Battery repair	6
Cleaning procedure	345
Downshifting caution	4C3, 39
Duty roster, form 6	2C11
Genl. Arnold—on PM	4C2
K. P. for truck drivers	103
General's flag	3C1
Spot check insp.	58
Welding structural parts	326

### DODGE

Alinement	105
Armature—testing	56
Battery—excessive gassing	182
B.O. Lights—proc. & inst.	24
Brake adj.	308
Brake drum, mce. & mod.	216
Brake squeaking	123
Brake vibration	278
Carburetor lubing	342
Carburetor mod.	4
Carburetor, sug. mod.	155
Center bearing oil seals	155
Coil shorting	182
Defroster equipment, proc.	160
Desert operation	85
Differential oil seal inst.	123
Distributor ass'y repl.	70
Fan belt mod.	155
Fan blade shield	20
Front spring mod.	7
Front wheel shake	122
Gas tank mod.	31
Gear lube leakage	313
Heat control valve adj.	36
Lower brake adj.	181
Lub. Guide	98
Maintenance	178
Maintenance manual	125
Panel mod.	39

Parts int.	155
Procurement	314
Propeller shaft repair	345
Publication plate cor.	125
Radio shielding repl.	124
Ring gear int.	39
Strg. knuckle mce. & lub.	151
Steering knuckle mod.	184
TM 9-1809 cor.	15
Tool set—mount.	8
Transfer case mce.	82
Transfer case mod.	7
Vital statistics	179

### ELECTRICAL SYSTEM

Armature test—Dodge, ¼-ton	56
Battery cable mod.—Diamond T	7
Battery charging	346
Battery, excessive gassing, Dodge, ¼-ton	182
Battery leakage, ¼-ton	309
Batteries for overseas	3C3
Battery repair	6
B.O. Light availability	320
B.O. Light inst. cor.	96, 121
B.O. Lights—proc. & inst.	24
B.O. Sealed units, salvage	22
Cadillac prelim. trg. manual cor.	3C1
Defroster equip., proc. Dodge, ¼-ton	160
Distributor ass'y repl.—Dodge, ¼-ton	70
Distributor caps, salvage	128
Distributor contact gap, ¼-ton	314
Distributor filter mod., 2½-ton	102
Distributor inst.—Ford	119
Dry-charged batteries mce.	164
Emergency ign. switch location M5A1	326
Generator Brush holder, mod.	213
Generator lub.	3C11
Headlight hinge lub.—Ford ¼-ton	23
Horn mce., 2½-ton	21
Horn mod., ½ & ¼-ton	183
Ignition keys—care	282
Insulation mod.	135
Light inst., shop trucks	71
Light switch repairs	87
Radio supp., 2½-ton	22
Shop truck light—imp.	71
Shortage—cause	277
Sparkplug mod.—Ford, ¼-ton	7
Sparplug repl., 2½-ton	101
Starter switch mce.	110, 343
Tail & B.O. Light mod.—GMC	279
Tail light mod. 2½-ton	124
Voltage reg. inst., 2½-ton	119
Water cleaning caution	298

### ENGINE

Carburetor mod., ¼-ton	4
Carburetor—sug. mod.	155
Cleaning	248
Crankcase valve spring mod., 2½-ton	134
Crankcase vent. system, ¼-ton	91
Crankcase vent. system mod., 2½-ton	101, 213, 225
Cylinder block rep.	58
Cylinder-head adj., ¼-ton	324
Downshifting caution	4C3
Drain plug mce.	69
Exhaust manifold rep. tool, ¼-ton	18
Exhaust mufflers	217
Fan belt adjustment, GMC	6
Fan belt mod. Dodge	155
Fly wheel ring-gear mce.	185
Governors, 2½-ton	120
Heat control valve adj. GMC, Dodge, Chev.	36

reg.	regulation
rep.	repair
repl.	replacement
resp.	responsibilities
revs.	revolutions

spec.	specifications
str.	strainer
tr. case	transfer case
trans.	transmission
trng.	training

Ident plate holes, caution, 2½-ton	135
Limited storage	313
Manifold heat control valve adj.	3C6
Manifold mod., ¼-ton	90
OE change—freq., procedure	97
Oil filter service, GMC	5
Oil line rep.—imp.	19
Oil pan int.	6
Overheating	229
Piston slap, Cletrac, MG1	312
Replacement, 2½-ton	293
Ring gear int.—Dodge	39
Spark plug repl. (overseas)	244
Speedometer cable lub.	23
Steel asbestos gasket adj., M8 Scout Car, Stude, 6x6, 6x4	295
Throttle control mod.	19
Timing mark mod.—¼-ton	56
Valve-cover gasket mce.	346
Water cleaning, caution	298
Water-Flooding prev.	244

### EQUIPMENT

Bow expansion cargo-dump bodies	88
Bow, tops—storage	310
Hoist pump caution	134
Hoist pump mce.	134
Hoist pump oper.	3C4
Paint spray mce.	152
Tool set mount.	153
Towing procedure	91
V tow-bar mod., Diamond T	151
Winch pins	152

### FEDERAL

B.O. Lights—proc. & inst.	24
Filter element repl.	71
Hydrovac—trouble shooting	166

### FORD

B.O. Lights—proc. & inst.	24
Brake pedal, int.	246
Cylinder head adj.	324
Distributor inst.	119
Radiator parts int.	246
Stock numbers	282

### FORD, ¼-TON

Air cleaner mod.	37
Air filter slot repair	311
Battery leakage	309
Beadlock insertion	88
Brake & clutch pedal inst.	122
Brake drum, mce. & mod.	216
Carburetor air cleaner tubes	3C4
Clutch pressure plate springs, repl.	214
Constant-velocity joints lub.	23
Cooling system, desert climate	85
Cowl strip, mod.	244
Crankcase vent sys.	91
Differential oil seal inst.	123
Distributor contact gap	314
Exhaust manifold rep. tool	18
Frame ass'y dimension—cor.	165
Grease gun mount.	326
Headlight hinge lub.	23
Heat control valve adj.	36
Hood cushioning	20
Improper loading	3C2
Lubrication	3C11
Manifold mod.	90
Radiator inlet breakage	308
Rear panel mod.	3
Rear seat mce.	87
Rifle bracket inst.	7
Seat protection	88
Sector-shaft bushing mod.	23
Shift fork guide, mod.	156
Shift-lever mce.	149
Skid pan mod.	181

Sparkplug mod.	7
Spring clips	280
Starter mce.	343
Steering repair	342
Tie-rod mod., sug.	181
Tie-rod end wear	278
Timing mark mod.	56
Tire bead lock mod.	39
Tool storage	277
Torque field kit mod.	156
Trans. ass'y rep.	18
Trans. disassembly	90
U-joint bearing lub.	60
U-joints, int.	207
Windshield bumper repl.	39

### FORD, 1½-TON

Cab and tire carrier mod.	39
Hydrovac bleeding	281

### FORD, M8

Clutch adj.	325
Steel-asbestos gasket adj.	295

### FORMS

Automotive disability reports	3C7
Check-up tags	7
Check-up tag placement	3C2
Driver's trip ticket	2C3
Duty rosters—PM records	34

### FUEL & FUEL SYSTEM

Air cleaner clamp, inst. GMC	314
Air cleaner mce.	4C4
Air cleaner mce., 2½-ton	114
Air cleaner mod.	37
Air filter slot repair, ¼-ton	311
Carb. air cleaner tubes, Ford ¼-ton	3C4
Carb. mod.	62
Filter ass'y, repl.	38
Filter element repl., Fed., Auto-car	71
Filter mce.	60
Gas filter mce.	247
Gas filter, mce. 2½-ton	249
Gas tank filler neck mod.	123
Gas gage tester—imp.	183
Gas tank, ¼-ton	345
Gas tank mod., Dodge, Chev.	31
Gas tank cap mod.	247
Gasoline impurities	61
Quality of fuel	61
Rocker arm screw inst. 2½-ton	119
Stock numbers—Ford	282
Throttle control mod.	19
Throttle lub., Dodge ¼-ton	342
Throttle stud leakage, Chev. 1½-ton	122

### GMC

Air cleaner clamp, inst.	314
Air cleaner mce.	114
Axle mce.	345
Axle oil seal repair	277
Axle oil seal repl.	124
Side gear backlash	124
B.O. lights—proc. & Inst.	24
Brake bleeding adapter	342
Brake drum, mce. & mod.	59,155,216
Brake wheel cylinders, mod.	228
Center bearing oil seals	155
Clutch spring mce.	23
Cooling system—Desert climate	85
Crankcase valve spring mod.	134
Crankcase vent. system, mce.	225
Crankcase vent. system, mod.	101,213
Differential air vent., mce.	89
Differential oil seal inst.	123
Distributor filter mod.	102
Eng. ident. plate, caution	135
Fan belt adj.	6
Fender reinforcement	183
Front bumper mod., 2½-ton	155

Fuel can-mount	89
Gas can bracket—inst.	7
Gas filter, mce.	249
Gear lube leakage	313
Governors	120
Heat control valve adj.	36
Hood safety catch	119
Horn mce.	21
Hydrovac—bleeding	281
Hydrovac lubrication	186
Hydrovac—trouble shooting	166
Lock ring mod.	4
Oil check resp.	135
Oil pan int.	6
Oil pressure gage, mod.	181
Pedal free-play	22,69
Propeller shaft yoke, adj.	248
Radiator frame repl.	102
Radiator grill crack	309
Radiator pressure cap care	101
Radio suppression filter removal	249
Radio suppression system	22
Rocker arm screw int.	119
Spare parts kit	39
Spare tires	247
Spare tire covers	128
Spark plug repl.	101
Spark plug repl. (overseas)	244
Spring-stop bracket install.	293
Spring stud servicing	59
Superstructure inst. wood body	78
Suppressor inst.	101
Tail light mod.	124
Tail & B.O. light—mod.	279
Tie rod end, mod.	37
Tonnage, 6x6, 6x4—clarification	280
Transmission noise	311
Trans. snap ring inst.	57
U-joint mod. and int.	263
Valve-cover gasket mce.	346
Voltage regulator inst.	119
Waterpump bolt mod.	7
Wheel hub mod.	155
Winch power-take-off boot	278

### IDENTIFICATION

Red Cross, license reg.	312
Rubber stamp, imp.	20
Suppressed vehicle marking	341
Weight class marking	3C11

### INSPECTIONS

Condition tags	7
Spot checking	58

### INSTRUMENTS

Mod.—Studebaker	7
Oil pressure gage mod., 2½-ton	7
Tac. cable mce., Autocar	70
Tire pressure gage, mod.	213

### LUBRICATION

Axle, ¼-ton	3C11
Center bear. oil seal, Dodge, GMC	155
Chassis fitting mce.	68
Commercial solvents—use of	39
Constant-velocity joints, ¼-ton	23
Drain plug mce.	69
Fording, caution	320
Front axle	330,345
Gas decontaminator mount.	224
Gear lube leakage, GMC, Dodge ½-ton	313
Grease gun mount., ¼-ton	326
Grease seal inst.	121
Headlight hinge—Ford ¼-ton	23
Hydrovac cylinders	3C8
Hydrovac—2½-ton	186
Guide, Dodge ¼-ton	98
Lube-gun, improvised	90
Oil analysis	327
OE change, freq. & procedure	97
Oil change, M1 wrecker	121

Oil check resp., 2½-ton	135
Drain plug mod. Willys	277
Oil seal mce.	345
Short dipstick (W-LF-M1)	120
Speedometer cable	23
Spring seat bearing	345
Steering knuckle mce. Dodge ¼-ton	151
Tie-rod lub., ¼-ton	181
Transfer case	106
U-Joint	3C4,263
U-Joint, GMC	263
U-Joint bearing—Ford ¼-ton	60
U-Joint cork seals, mce. & mod.	156
Wheel bearings	217,256
Wheel bearing shafts	57
Wheel hub packing	60,161
Winch cable	22,218

### MACK

B.O. lights—Proc. & Inst.	24
Shifting	230
Spare parts kit	7
Trans. part number cor.	3C6
Winch drive-chain	325

### MISCELLANEOUS

Bow and top holder, inst.	310
Drivers' ratings	280
Jacking 6x6	3C10
Key care, ignition, tool box	282
Portable ramps imp.	288
Rust-proof coatings	120
Tire gage & key holder imp.	89
Truck washing procedure	298

### OPERATIONS

Cleaning procedure	248
Down grade caution	65
Downshifting	4C3,39
Fording, caution	320
Handbrake mce.	20
Improper loading, ¼-ton	3C2
Mce. before embarkation	120
Overloading	314
P. M. records—duty rosters	34
Tire conservation	308
Towing precaution	91
Traction & towing, 40-ton	216

### PAINT

Painting shafts, Diamond T	102
Brake hose caution	120
OD on Red Cross cars	311
Suppressed vehicle marking	341
Weight class marking	3C11

### PROCUREMENT

Parts exchange	32
T/O, T/E subs. 1½-ton and 2½-ton	3C7
Vehicle exchange	281
"Why Requisitions Go Wrong"	240

### PROPELLER SHAFT

Boot guard, imp.	214
Yoke adj., 2½-ton	248
Yoke ass'y repl.	345

### PUBLICATIONS

AR 580-15 Veh., opr. mce.	232
Cad. prelim. Trg. Manual, cor.	3C1
Dodge service catalog	125
Lub. guide, TB 9-803	3C11
SNL G-85 Chev. parts	3C3
TM 9-808, Dodge ¼-ton, review	125
TM 10-1607, changes	69

### RADIO

Radio master tube mod.	184
Shielding repl., ¼-ton	124
Suppression filter, 2½-ton	249

adj. adjustment  
amb. ambulance  
ass'y assembly  
bear. bearing  
carb. carburetor

cart. cartridge  
Chev. Chevrolet  
chg. change  
clar. clarification  
cor. correction

dist. distributor  
ech. echelon  
emb. embarkation  
ext. extension  
exting. extinguisher

gen. generator  
ident. identification  
imp. improvised  
insp. inspection  
inst. installation

Suppression sys., 2½-ton	22
Suppressor inst., 2½-ton	101
Terminal box inst., Willys	39
<b>RECLAMATION</b>	
Antifreeze	99
<b>SALVAGE</b>	
B.O. sealed units	22
Distributor caps	128
Tires	32
<b>SPRINGS</b>	
(See Chassis)	
<b>STEERING</b>	
Bell-crank int. ¼-ton	342
Knuckle mod.—Dodge ½-ton	184
Lock ring mod., Chev. & GMC	4
Sector-shaft bushing mod.	
Ford ¼-ton	23
Tie-rod end mod. GMC, Chev.	37
Tie-rod end wear, ¼-ton	278
Tie-rod lub., ¼-ton	181
<b>STORAGE</b>	
Limited use	313
Spare tires—Diamond T	151
Tires (TM 31-200)	217
Tire chains	218
Tools, ¼-ton	277
<b>STUDEBAKER</b>	
Instrument mod.	7
Steel asbestos gasket adj.	295
<b>SUPPLY</b>	
Conversion kit, Chev. 1½-ton	3C8
Parts exchange	32
Parts int., Auto-car	3C4
Shop truck, 2nd-echelon	314
Spare parts kit, Diamond T	7
<b>TIRES</b>	
Air pressure, bomb lift M1	324
Beadlock insertion, ¼-ton	88
Care & mce.	52,88
Changing, tips on	77
Circumference measurement	214
Conservation	247,308
Cover for spare, 2½-ton	128
Mce. M1 Wrecker (Kem)	155
P.M. reminder	245
Pressure, M3A1	311
Pressure Mce. 10-ton wrecker	155
Retreading	52
Rotation	88
Salvage	32
Spare tires, 2½-ton	247
Spare tire storage, Diamond T	151
Storage (TM 31-200)	217
Synthetic, care & mce.	333
Tire carrier mod. Ford 1½-ton	39
Traction devices, inst.	313
Treads, uneven wear	48
Valves on dual mounts	282
<b>TOOLS</b>	
Brake bleeding adapter GMC	342
Cold starting field kit, mod.	39
Drill holder	58
Driver's tool roll sug.	7
2nd-echelon tool sets, mount	153
Exhaust manifold replacement	18
Gas gage tester, imp.	183
Lube-gun, improvised	90
Mount, 2½-ton, ¼-ton	8
Pioneer rack inst.	88
Portable ramp, imp.	288
Prices (2nd-echelon)	249
Snap ring persuader	57
Storage, ¼-ton	277
Stowage, 2nd-echelon	
Set No. 2	314

int.	interchangeability
irr.	irregularity
lub.	lubrication
mce.	maintenance
mech.	mechanic

Tire gage & key holder imp.	89
Tire gage mount.	20
Tool roll sug.	7
Wheel bearing pullers	60
<b>TRAINING</b>	
Dodge, 1½-ton, 6x6	178
Use of abused vehicles	88
<b>TRANSFER CASE</b>	
Alinement Dodge ½ & ¾-ton	105
Mce. Dodge ¾-ton	82
Mod.—Dodge ¾-ton	7
Proper lubricants	106
Shift fork guide, mod.	156
Shift gear caution	263
Shift, gear mod., Chev. 1½-ton	154
Vent. ass'y mod. Chev. 1½-ton	104
<b>TRANSMISSION</b>	
Control-housing ass'y rep.	
¼-ton	18
Gear noise, GMC	311
Mce. ¼-ton	90
Mod. Willys	123
Shift-lever mce.	149
Shift-lever mod. 7½-ton	230
Skid pan mod. ¼-ton	181
Snap ring inst. 2½-ton	57
<b>UNIVERSALS</b>	
Bearing lub.—Ford ¼-ton	60
Grease fitting variations	282
Lubrication	3C4,156
<b>WHEELS</b>	
Bearing lub.	217,256
Bearing shafts lub.	57
Brake wheel cyl., mod. 2½-ton	228
Dual mounting	282
Front wheel shake	
Dodge 1½-ton	122
Grease seal mce.	121
Hub lubrication	161
Lub. Mod., Chev. & GMC	154
Mce.	344
Oil leakage	197
Oil seal mce.	345
Repacking bearings	60
Tire bead-lock mod. Ford,	
¼-ton	39
Traction devices, inst.	313
<b>WHITE</b>	
Brake line mod., M3A1	184
Parts interchangeability	3C4
Steel asbestos gasket adj.	295
Tire pressure, M3A1	311
<b>WILLYS</b>	
Air cleaner mod.	37
Air filter slot repair	311
Battery leakage	309
Beadlock insertion	88
Brake & clutch pedal inst.	122
Brake drum, mce. & mod.	216
Clutch springs, repl.	214
Cold starting field kit mod.	39
Constant-velocity joints lub.	23
Cooling system, desert climate	85
Cowl strip, mod.	244
Crankcase vent. system	39,91
Differential oil seals inst.	123
Exhaust manifold rep. tool	18
Frame ass'y dimensions cor.	165
Fuel pump removal	87
Gas tank shield, function	345
Heat control valve adj.	36
Hood cushioning	20
Improper loading	3C2
Manifold mod.	90
Oil line removal	87
Oil pan drain plug mod.	277
Radio terminal box—inst.	39

mod.	modification
mount.	mounting
proc.	procurement
pubs.	publications
recl.	reclamation

Rear panel mod.	3
Rear seat mce.	87
Rifle bracket inst.	7
Seat protection	88
Shift-lever mce.	149
Skid pan mod.	181
Spring clips	280
Tie-rod end wear	278
Tie-rod lub.	181
Timing mark mod.	56
Tool storage	277
Torque field kit mod.	156
Tracta joints, inst.	4,207
Transmission mce.	90
Transmission ass'y rep.	18
Transmission mod.	123
U-Joint bearing lub.	60
Windshield bumper repl.	39
<b>WINCH</b>	
Cable cover	60
Cable guides, Diamond T	151
Cable lub.	218
Cable mce. and lub.	22
Cable mod. Diamond T	135
Chain adj., Mack 7½-ton	325
Covers	218,312
Power-take-off boot, GMC	278
Shear pin, mce.	200
Towing cable mce.	137
Water cleaning caution	298
<b>ZENITH</b>	
Drive lever ass'y mod.	4
<b>AMPHIBIANS</b>	
Spare parts kit, ¼-ton	
Diamond T, Mack	7
Winch mod.	19
Generator brush holder mod.	213
Battery clamp repl.	103
Voltage regulator mod. ¼-ton	19
General mce.	321
Stars—location	60
Oil seal adequacy	103
Bearings, hubs, mce.	103
Boot guard, imp.	214
Drive shaft mod.—¼-ton	19
<b>LIGHT TANKS</b>	
<b>BRAKES</b>	
Down grade caution	65
<b>CHASSIS</b>	
Pintle hook mce.	135
Towing pintle mce.	228
<b>CLUTCH</b>	
Clutch release lever mod.	213
Slipping prevention	213
<b>EDITORIAL</b>	
Tools, proper use	144
<b>ELECTRICAL SYSTEM</b>	
Blackout lights—proc.	71
Emergency ign. switch, M5A1	326
Fire warning bulb	264
<b>ENGINE</b>	
Air cleaner mce.	139
Crank case, air cleaner	262
Cylinder mce.	132
Exhaust elbow lock	70
Inspection (TB 700-66)	3C1,3C5
OE Condition	341
Operating abuse	129
Reserve speed	293
Servicing & insp.	100
Servicing, cor.	224
Sponson door gasket	294
Temperature caution	66

reg.	regulation
rep.	repair
repl.	replacement
resp.	responsibilities
reva.	revolutions

<b>EQUIPMENT</b>	
Maintenance publications	138
<b>FINAL DRIVE</b>	
Lubrication	3C9
<b>FUEL SYSTEM</b>	
Air cleaner int.	262
Air cleaner mce.	139
<b>HULL</b>	
Gasket inst., sponson door,	
M5A1, M8	294
Hatch mce.	4C11
Joint sealing	132
Turret lock, caution	133
<b>IDENTIFICATION</b>	
Score card	55,168
<b>INSTRUMENTS</b>	
Instrument panel mod.	135
Oil pressure warning mod.	3C5
<b>INSPECTION</b>	
TM 9-727C, cor.	3C1
<b>LUBRICATION</b>	
Bogie wheel fittings	69
Clutch release lever shaft	213
Engine mce. rating	341
Final drive	3C9
<b>MISCELLANEOUS</b>	
Overseas mce. & recovery	272
<b>OPERATIONS</b>	
Backing up	293
Driving cautions	131
Down grade caution	65
Safety & comfort mod.	2C5
Sub-normal temperatures	66
Towing precautions	135
<b>PROPELLER SHAFT</b>	
U-joint alinement	7
<b>PUBLICATIONS</b>	
Equipment mce.	138
<b>TRACKS</b>	
Bogie wheel lub.	69
Idler wheel repl.	3C5
Installation	69
Rubber tracks, M5, M3 series	196
Tightening	315
<b>TRAINING</b>	
Identification	55
Overspeeding (M4)	131
Vehicle ident. chart	168
<b>TRANSMISSION</b>	
Oil pressure check	3C5
<b>UNIVERSAL</b>	
Shaft alinement	7
<b>MEDIUM TANKS</b>	
<b>ACCESSORIES</b>	
Periscope—caution	67
Dipstick correction	38
<b>ARMAMENT</b>	
Elevating mechanism—3" gun	283
<b>BRAKES</b>	
Down grade caution	65
<b>CHASSIS</b>	
Pintle hook mce.	135
Shock absorber adj.	247

spec.	specifications
str.	strainer
tr. case	transfer case
trans.	transmission
trng.	training

Towing pintle mce.	228
Clutch-mce.	197
Throwout bearing, lub.	231

<b>COOLING SYSTEM</b>	
Shutter & deflector use	198
Splash panel mod.	182

<b>EDITORIAL</b>	
Tools, proper use	144

<b>ELECTRICAL SYSTEM</b>	
Battery switch protector	119
Fire warning bulb	264
Generator repl.—M4A1	135

<b>ENGINE</b>	
Bearing improvements	264
Cylinder mce.	132
Exhaust deflectors, mce.	3C5
Exhaust elbow lock	70
Inspection (TB 700-66)	3C5
OE Condition	341
Oil temperature caution	66
Operating abuse	129, 293
Servicing & insp.	100
Servicing, cor.	224
Shutter & deflector door mce.	198
Spark plug mce.	196
Timing specification mod.	3C4

<b>EQUIPMENT</b>	
Maintenance publications	138

<b>FIRE EXTINGUISHING SYSTEM</b>	
Flame detector lights	264

<b>FUEL SYSTEM</b>	
Electric fuel pump mce.	197
Fuel pump ident.	262
Gas tank mod.	3C5, 135
Line repair exp., M7	342
Relief valve mod.	38

<b>HULL</b>	
Crew hand-holds inst. M10, M10A1	295
Door hatch—caution	67
Door strap mod. How. M7-105MM	96
Hatch mce.	4C11
Joint sealing	132
TB 700-16 cor.	3C2
Traversing mechanism—caution	3C2
Turret lock, caution	133
Turret traverse lock mod.	229
Turret traverse switch	135

<b>IDENTIFICATION</b>	
Score card	55,168

<b>INSTRUMENTS</b>	
Instrument panel mod.	135

<b>LUBRICATION</b>	
Clutch throwout bearing	231
Dipstick correction	38
Engine mce. rating	341
Gear oils, cor.	224

<b>MISCELLANEOUS</b>	
Overseas mce. & recovery	272
Battlefield recovery unit—T2	170

<b>OPERATIONS</b>	
Downhill caution	65,264
Driving cautions	131
Engine ventilation	198
Safety & comfort mod.	2C5
Sub-normal temperature	66
Towing precautions	135

adj.	adjustment
amb.	ambulance
ass'y	assembly
bear.	bearing
carb.	carburetor

<b>PROPELLER SHAFT</b>	
U-joint alinement	7

<b>PUBLICATIONS</b>	
Equipment mce.	138
SPC—use	3C6

<b>TOOLS</b>	
Clamp for 3" gun—M7	271
Dipstick cor.	271

<b>TRACKS</b>	
Hub sprocket mod. SNL cor.	3C4
Idler repl. for overseas	102
Installation	69
Roller repl.	3C2
Rubber tracks, proc.	3C7
Sag adj.	102
SNL G104, cor.	96
Tightening	315
Track, sprocket capscrew repl.	101

<b>TRAINING</b>	
Engine idling period	293
Overspeeding (M4)	131
PM on T2	170
Vehicle ident. chart	55,168

<b>TRANSMISSION</b>	
Insulation	135

<b>U-JOINT</b>	
Propeller shaft mce.	247
Shaft alinement	7

<b>WINCH</b>	
Mce.—T2	170

## HEAVY TANKS

<b>EDITORIAL</b>	
Tools, proper use	144

<b>ENGINE</b>	
OE Condition	341

<b>HULL</b>	
Hatch mce.	4C11

<b>IDENTIFICATION</b>	
Score card	55,168

<b>LUBRICATION</b>	
Engine mce. rating	341

<b>PROPELLER SHAFT</b>	
U-joint alinement	7

<b>TRACKS</b>	
Tightening	315

<b>TRAINING</b>	
Vehicle ident. chart	55,168

<b>U-JOINT</b>	
Shaft alinement	7

## HALF-TRACKS

<b>ACCESSORIES</b>	
Tire repair kits—proc.	102

<b>AXLE</b>	
Front spring mce.	132

<b>BODY</b>	
Door stop mod.	128
Louver frame breakage	310

<b>BRAKES</b>	
Air tubes mod.	134
Hydrovac—trouble shooting	166

cart.	cartridge
Chev.	Chevrolet
chg.	change
clar.	clarification
cor.	correction

<b>CHASSIS</b>	
Spring bolt adj.	132
Wheelbase measurement	313
Staking nuts & bolts	229

<b>COOLING SYSTEM</b>	
Desert climate	85
Surge tank freezing	164

<b>ELECTRICAL SYSTEM</b>	
B.O. light inst.	121

<b>ENGINE</b>	
Restrictor plate inst.	100
Warm-up period	3C10

<b>FUEL SYSTEM</b>	
Filter assembly repl.	38
Fuel filter mod.	281, 3C9
Gasoline filters, mce. & mod.	247

<b>LUBRICATION</b>	
Cutting crankcase oil	313
Jack-shaft nut & seal, repl.	197
Rear differential leakage	197

<b>OPERATIONS</b>	
Driver's responsibilities	234
Warm-up period	3C10
Winch speed	134

<b>PROCUREMENT</b>	
Tire repair kits	102

<b>PUBLICATIONS</b>	
SNL G102 Revision	3C2

<b>RECLAMATION</b>	
Bogie rollers	36

<b>STEERING</b>	
Knuckle boot guard, mod.	196
Tie-rod adj.	198

<b>TOOLS</b>	
Band-track inst. clamp	169
Bogie mce.	350

<b>TRACKS</b>	
Band-track chains, proc. & inst.	228
Band-track inst.	169
Bogie roller, mce.	36
Chains—inst.	268
Guideplates, bogie rollers mod.	74
Idler spring adj. rod, mod.	196
Idler spring mod.	217
Inst. & adj.	3C6
Spring-loaded idler, mce.	73
Suspension system—mod.	72
Tension adj.	306
Track mod.	3C1

<b>TRAINING</b>	
Operation	234
TM 9-710A, TM 707	3C6
Vehicle ident. chart	168

<b>TRANSFER CASE</b>	
Lever lub.	67

<b>WHEELS</b>	
Wheel base measurement	313

<b>WHITE</b>	
Permanent governor inst.	100

<b>WINCH</b>	
Cable cover	60
Cable mce. and lub.	22
Control lever mod.	137

dist.	distributor
ech.	echelon
emb.	embarkation
ext.	extension
exting.	extinguisher

Covers, use	312
Periodic PM	218
Shear pin, mce.	200

## TRACTORS & TRAILERS

<b>BODY</b>	
Floor protector—¼-ton	57

<b>BRAKES</b>	
How. carriage mod.	39

<b>ELECTRICAL SYSTEM</b>	
B.O. Lights—proc. & inst.	24
Circuit tester	342
Light sockets, ¼-ton	21

<b>ENGINE</b>	
Piston slap, MG1, Cletrac	312

<b>LUBRICATION</b>	
Transfer case	67

<b>MISCELLANEOUS</b>	
Fuel carriers	103

<b>TIRES</b>	
Pressure, Bomb lift M1	324
Synthetic casings—Willys	39

<b>WHEELS</b>	
Hub installation	120

## MOTORCYCLES

<b>ACCESSORIES</b>	
Overseas spare parts kits	76

<b>ELECTRICAL SYSTEM</b>	
B.O. Light availability	320

<b>HARLEY DAVIDSON</b>	
Drive chain adj.	140
Drive chain int.	68
General mce.	140

<b>INDIAN</b>	
Drive chain int.	68

## MISCELLANEOUS

<b>ACCESSORIES</b>	
B.O. Light inst.	121
Drill holder	58
Fire ext. bracket rep.	264
Gas & water can bracket proc.	165, 111
Liquid Vesicant detector kits	46
Rifle brackets—proc.	180
Safety belt catch, mod.	277
Spare parts proc.	107
Windshield wiper mce.	152
Winterization kits	3C6

<b>ADVISORS</b>	
Assignment and procurement	320
Quarters for CAA's	281

<b>ARMY MOTORS</b>	
Bulk distribution	2C6
Company distribution	126
Contribution procedure	4C9
Distribution	320
ETO. printed edition	2C11
Personal subscriptions	308
T2 "Story" cor.	224

<b>ARMY REGULATIONS</b>	
Changes	294

gen.	generator
ident.	identification
imp.	improvised
insp.	inspection
inst.	installation

<b>CAMOUFLAGE</b>	
Poison gas detector paint	46
Removing ident. symbols	186
Windshield glass	153
<b>CHASSIS</b>	
Shock absorb. fluid, spec. & proc.	203
<b>CLEANING</b>	
Vehicle finish	280
<b>CLEANING &amp; PRESERVING</b>	
Comparative tests	128
Polaroid goggles	152
Solution spec.	123
Standardized kits, AF vehicles	103
<b>CONTAINERS</b>	
Extra gasoline, carriage	103
<b>COOLING SYSTEM</b>	
Preventive mce. & cleaning	258
Water pump bearings, mod.	184
<b>DOCTRINE</b>	
AR 850-15, C2—veh. density reports	3C1
Brehon Somervell, P.M.	112
Camouflage vs. indent.	186
Civilian automotive advisors	3C8
Driver assignment	185
Drivers' & mechanics' awards	38,185
Echelon responsibility	88
Echelon system of mce.	80
Field range mce.	3C4
1st-ech. importance, overseas	272
Form 6, P.M. records	34
GI License—civilians	185
Instructor awards	210
Officer drivers	249
Organizational mechanics	237
Parts hoarding	283,295
Parts mce.	117
Parts procurement	336
Rating for drivers, editorial	2C8
Safety caution	2C7
2nd-echelon responsibility	71
<b>EDITORIALS</b>	
AAF, P.M.	2C10
AR 850-15 review	2C7
"Army Motors", policy purpose	2C1
Shop safety precaution	2C7
Driving skill	2C10
Driver's trip ticket	2C3
Duty roster	2C11
"Harris Writes Home"	142
Motor officers' duties	2C6
Names for vehicles	2C8
Inspect and service	2C2
Ordnance publications	2C6
Personnel problems	2C9
Ratings for drivers	2C8
Tankmen get a break	2C5
Trib. to Col. Bruno W. Brooks	2C4
<b>ELECTRICAL SYSTEM</b>	
Battery carrier protection	277
Battery hookup	31
B.O. kits—proc.	3C9
Horn wiring	247
Light tester imp.	309
PM on combat vehicles	228
Radio static elim.	289
Storage batteries mce.	211
Voltmeter repl.	100
<b>ENGINE</b>	
Air cleaner mce.	265
Metallic sodium valves	313
Oil filter elements	3C3

int.	interchangeability
irr.	irregularity
lub.	lubrication
mce.	maintenance
mech.	mechanic

Sludge prevention	193
Winterization	193
<b>EQUIPMENT</b>	
Air compressor mod.	224
Battalion mce.	3C3
Battery carriers protection	227
B.O. lights	320
Equipment tool set 2nd-ech.	3C3
Extinguishers mce.	107
Field range mce. resp.	3C4,3C5
<b>FIRE FIGHTING</b>	
Extinguisher bracket rep.	264
Extinguishers mce.	107
<b>FORMS</b>	
AR 850-15 C3	71
Aut. disability report, proc.	160
Defective equip. report	296
Duty roster editorial	2C11
Duty roster, mod. mce. record	261
Exchange tags mod.	204
Index tabs	309
Lub. chart symbols	182
Requisitioning procedure	240
Requisition, W.D. QMC 400	107
Shipping tickets	92
Stock records, W.D. QMC 424	107
Time check card, sug.	183
Trip-tickets proc.	3C8
Veh. disability report	3C3
<b>FUEL</b>	
B.O. ident. tags	263
Extra gasoline, carriage	103
Gasoline handling	3C2
<b>FUEL SYSTEM</b>	
Air cleaner, cold weather mce.	3C10
Air cleaner mce.	3C8,265
Carburetor deposit	313
<b>IDENTIFICATION</b>	
Camouflage vs. recognition	186
National emblem, overseas	293
Radio suppression ident. mark	216
Unit ident. numbers	59
Vehicle marking—weight	264
<b>INSTRUCTION</b>	
Drivers' & mech. inst. awards	3C3
Mce. wall charts	165
<b>LUBRICATION</b>	
Air cleaner, cold weather mce.	3C10
Air cleaner mce.	3C8
B.O. ident. tags	263
British & U.S. equivalents	257
British-U.S. int. chart cor.	3C11
Clutch bearings, TB cor.	3C5
Engine oil solvents	3C4
Hydraulic fluid, spec. & proc.	203
Lube fitting repl. & int.	33
Oil filter element tests	3C3
Oil filter mce.	5
Oil seals, mce.	196
Publications recommended	192
SAE ratings, U.S. vs. Brit.	111
Storage—caution	86
Sub-zero gear lub.	3C6
Sug. symbols, lube record	182
Vent. plug mce.	133
Winch cable	60,137,218
<b>OPERATIONS</b>	
Anti-freeze caution	256
Commercial solvents, use of	39
Duty roster—overseas	90
GI driving permits	246

mod.	modification
mount.	mounting
proc.	procurement
pubs.	publications
recl.	reclamation

Governor, purpose & reg.	248
PM system	88
PM winterization	4C7
PM (Maj. Gen. A. C. Gillem, Jr.)	4C5
Resp. of echelons	80
2nd-echelon resp.	71
Sodium disposal	313
Stencil application	5
Sub-zero starting	3C6
Tire mce.	4C8
Unauthorized driving	262
Vehicle mod., W.D.C. No. 47	21
<b>PAINTS &amp; PAINTING</b>	
Care & mce.	280
Gasoline solvent paint	59
Ident. marking	293
Poison gas detector paint	46
Repainting vehicles	3C7
Spray painting, tropics	152
Star stencils—proc.	5
Unit ident. numbers	59
Varnish proc.—cor.	128
Weight marking	264
<b>PARTS</b>	
Hoarding	283
Mce.	117
Ordnance number	3C7
Procurement	165,336
Requisitioning, AGF	164
Salvage	206
<b>PRESERVATIVES</b>	
Basic inhibitor test	128
<b>PROCUREMENT</b>	
Bearings	3C9
B.O. kits	3C9
Drivers' & mechanics' award	280
Local purchasing	3C4
Publications	254
Requisitioning shop equip.	281
Spare parts	107,264
Why Requisitions go wrong	240
<b>PUBLICATIONS</b>	
All-in-one SNL—review	274
AR 1-5—Index to AR's	45
AR 850-15 C3 Note	71
Army Motors cor.	3C1
Basic mce. & ASF Materiel	260
Change in FSMWO's	296
Civ. automotive advisors' pub.	3C6
Dukw PM guide	323
Form 6—duty roster	261
Index to ordnance publications	125,199
Int. book	92
LAP superseded	224
Motor vehicle pub.	301
Lube manuals	192
Maintenance regulations	2C7
Motor vehicle inspection	233
MTTSB's, status clarified	103,187
New OFSB 1-1	135
New TM 9-2800	198
OFS proc. dist.	230
OFS pub. distribution change	3C1
OFSC's discontinued	3C4
Ordnance motor book obsolete	3C6
Ordnance pub.—sug.	2C6
OSPI published monthly	3C3
Parts allowances (1st and 2nd-ech.)	249
Parts common & int. books, dist.	165
P.M. work sheets	1
Procurement	133,251,348
Procurement of mce. manuals	316
Publication, distribution, procurement	16
SNL's condensed	165

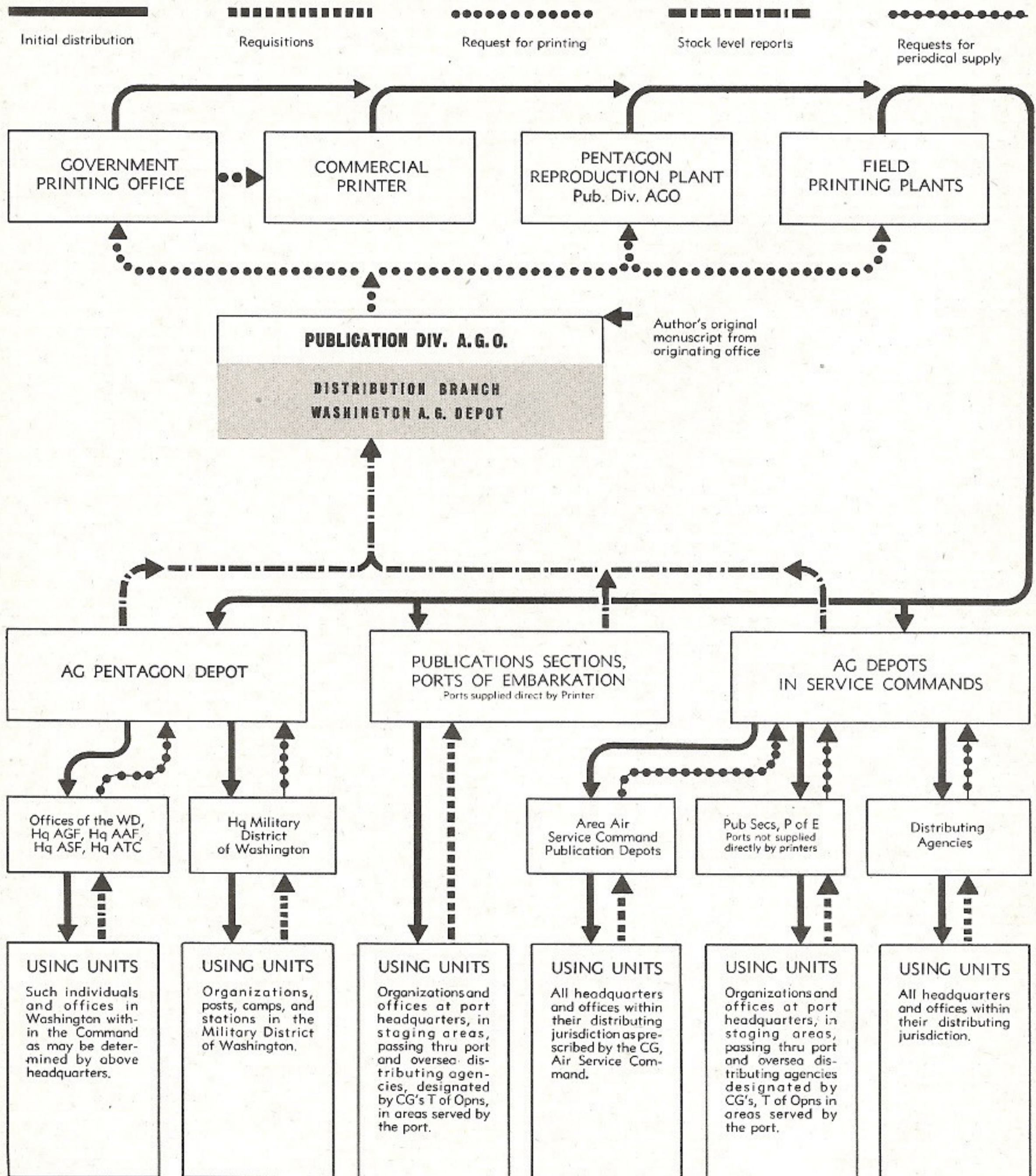
reg.	regulation
rep.	repair
repl.	replacement
resp.	responsibilities
revs.	revolutions

SNL G-508 cor.	282
SNL's—proc. and use	40
Sources of supply for AAF	316
SPC's, size mod.	103
TM 10-1513, 10-1349 cor.	165
T/O and T/E combined	3C3
T/O and T/E changes	215
Tool lists (SNL's)	219
Tool set changes	146
T/OP—proc.	228
Types of technical manuals	126
Vehicles in storage	251
Vehicle insp. & mce.—TM's	198
WD—AGO forms	3C11
WDC PM Schedule	3C11
<b>RADIO</b>	
Battery hookup	23
Static elimination	289
<b>RADIO SUPPRESSION</b>	
S-29 radio proc.	3C1
<b>RECLAMATION</b>	
Light tester imp.	309
Oil conservation	343
<b>SALVAGE</b>	
Parts exchange	206
<b>SUPPLY</b>	
Bearing shortage	3C9
Modification kits	295
Over-requisitioning	4C10
Parts exchange	3C2
Parts int.	92
Parts procurement	133
Parts proc. overseas	244
Repl. kits—waterproofed	128
Spare parts, mce.	3C10
<b>TIRES</b>	
Maintenance	4C8
Mce. and care TM 31-200	95
Spare tire locks	3C9
TM 31-200 cor.	160,3C3
Training schools estab.	133
<b>TOOLS</b>	
Armored force set—revised	3C2
Assignment record	277
Correct usage	84,176
Gas gage tester cor.	279
Jacks, Fed. Stock Nos.	282
Lub. tools mce.	86
Lug wrench, mod.	215
Manual spec. & proc.	219
Medical unit sets	3C3
Mis-use of	144
Oil seal setter	309
Overseas equipment	272
Post, camp, station set—revised	3C2
Special purpose tools	84
Tool sets publications & proc.	146
<b>TRAINING</b>	
Army instruction—TM 21-250	138
Driver training course	4C10
Mce. & driving before emb.	111
Tire mce. schools estab.	133
Tool use	176
Value of tools	249
Vehicle ident. chart	168
<b>WHEELS</b>	
Bearing repl.	3C8
<b>WINCH</b>	
Cable lubrication	218
Cable speed	134
Towing cable mce.	137
Towing—slip plate imp.	245

spec.	specifications
str.	strainer
tr. case	transfer case
trans.	transmission
trng.	training

# FLOW CHART OF DISTRIBUTION OF W. D. PUBLICATIONS

## PUBLICATIONS PROCESSED BY A. G. O.



---

# The Year's Directives

*A complete check-list of War Dept. AGO and Ordnance publications affecting 1st and 2nd-echelon motor maintenance—and how to get them.*

---

## WAR DEPARTMENT AGO PUBLICATIONS

AR—Army Regulations  
FM—Field Manual  
TM—Technical Manual  
TB—Technical Bulletin

MWO—Modification Work Order  
TC—Training Circular  
WDC—War Department Circular

Distributed through Post Adjutants by AG Depots in each Service Command:

Boston AG Depot, 594-596 Commonwealth Avenue, Boston 15, Mass.  
New York AG Depot, 111 Eighth Avenue, New York 11, N. Y.  
Baltimore AG Depot, 601 South Haven Street, Baltimore 24, Md.  
Atlanta AG Depot, Glenn Street and Murphy Avenue, S. W., Atlanta, Ga.  
Columbus AG Depot, 42-52 South Starling Street, Columbus 8, Ohio.  
Chicago AG Depot, 111 North Canal Street, Chicago 6, Ill.  
Omaha AG Depot, 16th and Cuming Streets, Omaha 2, Neb.  
San Antonio AG Depot, San Antonio, Texas.  
Ogden AG Depot, 2325 Wall Avenue, Ogden, Utah.  
AG Pentagon Depot, The Pentagon, Washington 25, D. C.

Distributed to AAF Activities by Publications Distribution Branch of Area Air Service Commands (see AAF Reg. 5-9).

Distributed outside Continental United States by Ports of Embarkation.

Ordnance TM's and FM's distributed in Central Pacific Area by Ordnance Officer, CPA (see address below).

---

## ORDNANCE DEPARTMENT PUBLICATIONS

FSMWO—Field Service Modification Work Order  
OFSB—Ordnance Field Service Bulletin  
OPSI—Ordnance Publications for Supply Index

SNL—Standard Nomenclature List  
Organizational Spare Parts and Equipment (OSPE)  
Service Parts Catalog (SPC)  
List of All Parts (LAP)

Distributed through Ordnance Officers by AG Depots listed above.

Overseas units (other than Central Pacific Area) with San Francisco APO's request on Publications Supply Officer, Overseas Supply Division, Warehouse B—Oakland Branch, San Francisco Port of Embarkation, Oakland, Calif.

Central Pacific Area units request on the Ordnance Officer, Hq. U. S. Army Forces, Central Pacific Area, APO 456, % Postmaster, San Francisco, Calif.

Overseas units with Seattle APO's request on Military Publications Supply Officer, Ordnance Unit, Overseas Supply Division, Seattle Port of Embarkation, Warehouse No. 7, Seattle 4, Wash.

Overseas units with New Orleans APO's request on The Adjutant General Publications Supply Officer, New Orleans Port of Embarkation, Poland and Dauphine Streets, New Orleans 12, La.

Overseas units with Miami APO's request on Atlanta AG Depot (address above).

Overseas units with New York APO's request on (a) the Ordnance Officer, Ordnance Section, Hq. MBS, Depot 150-0, APO 600, % Postmaster, New York, N. Y., if located in territory served by this APO, and (b) on New York AG Depot (address above) if located elsewhere.

Distributed to AAF Activities by Area Air Service Commands (see AAF Reg. 5-9).

**Office, Chief of Ordnance-Detroit, Does Not Distribute Publications to the Field**

---

*Directives affecting two or more vehicles, and vehicles affected are marked with an asterisk (\*).*



\*G-102, OSPE, Sec. 22, Steering group. (1 Jan. 43)  
\*G-102, OSPE, Sec. 26, Piece mark conversion list. (4 Feb. 43)

TB's  
\*700-45, Fuel Sediment bowl.  
\*700-47, Service limit bogie rollers.  
\*700-54, Tire repair kit.  
\*700-105, Tire lock ring removing tool.

### CARRIAGE, MOTOR, 81 MM MORTAR—M4—\*M4A1

FSMWO's  
G-102, W20, Blackout driving lights.  
G-102, W20, Blackout driving lights (cancelled by C1)  
G-102, W22, Hand rails.  
G-102, W23, Bogie Volute Spring.  
G-102, W24, Eliminate tire scuffing on hood side armor plate.

OFSB's  
6-G-102, Lubrication instruction.  
SNL's  
G-102, OSPE, (14 July 43)  
G-102, OSPE, Sec. 1A Parts change directory. (24 Dec. 42)

G-102, OSPE, Sec. 10 Generator and starter. (1 Jan. 43)  
G-102, OSPE, Sec. 13 Engine Group. (1 Jan. 43)  
G-102, OSPE, Sec. 22 Steering Group. (1 Jan. 43)  
G-102, OSPE, Sec. 26 Piece mark Conversion list. (4 Feb. 43)

TB's  
\*700-45, Fuel Sediment bowl.  
\*700-47, Service limit bogie rollers.  
\*700-54, Tire repair kit.

### CARRIAGE, MOTOR, 3 INCH GUN, M5

SNL's  
G-120 Temp. C1, List of spare parts.

### CARRIAGE, MOTOR, 37 MM GUN, M6

FSMWO's  
G-121-W1, Lubrication instructions on instruction plate, cancelled by C1.  
G-121-W2, Drive gear thrust pad.  
G-121-W4, Relocate fuel line.  
G-121-W5, Carburetor throttle lever and driver.  
G-121-W6, Bucket seats moved back.

OFSB's  
6-G-121, Lubrication instructions.  
SNL's  
G-121-OSPE (8 Sept. 43)  
G-121- C1, Parts and Equipment (10 Dec. 42)  
G-121- OSPE, Temp. C1.  
G-121- OSPE (including C1).

TB's  
750A-1, Publication number plate.

### CARRIAGE, MOTOR, 105 MM HOWITZER, M7

FSMWO's  
G1-W2, Clearance for operation of suspension with steel track.  
G1-W4, Insulate accelerator pedal.  
G1-W-5, Parking brake.  
G1-W-7, New towing shackle pin.  
G1-W-8, Hand Grenade boxes and clutch pedal guard.  
G128-W2, Oil tank breather.  
G128-W3, Fuel relief valve screen.  
G128-W4, 80 Octane Fuel.  
G128-W5, Magneto.  
G128-W6, Bucket seats moved back.  
G128-W9, 7-Cylinder priming system.  
G-128-W10, Clutch release bearing  
G128-W11, Ventilated clutch.

G128-W12, Valve parts in fuel pump.  
G128-W14, AC Pump and adapter.  
G128-W16, Stowage brackets.  
G128-W17, Sand shields.  
G128-W20, Gunners hand grip.  
G128-W21, Install improved muffler bracket.  
G128-W22, Ammunition container and first aid kit.  
G128-W23, Clearance for drivers arm.  
G128-W25, Armor Plate.  
G128-W26, Provide seal between armor plate and fuel tank filler neck.  
G128-W27, Install new type fuel cut-off solenoid connecting rod.

SNL's  
G-128, OSPE  
G-128, OSPE, Vol. 1 (Temp. C1)  
G-128, OSPE (including C1) (8 Sept. 43)  
G-128, OSPE Vol. 1 SPC. (15 Aug. 43)  
G-128, OSPE C3 (8 Nov. 43)  
G-128, OSPE C4 (23 Nov. 43)

TB's  
700-34, Cold weather engine oil temperature.  
700-39, Radial engine.  
700-51, Flame detector.  
700-52, New type cam assembly.  
700-53, Magneto timing change.  
700-57, Transmission oil return line.  
700-70, Hub sprocket capscrew.  
700-72, Bogie wheel bearing and seal.

700-80, Periodic check of pioneer compasses.  
700-90, Towing pintles.  
700-91, Fuel tank filler neck, strainer, seal and vent.  
700-94, Dust accumulation in clutch.  
700-106, Replacement of steel tracks.  
700-107, Checking of compasses.  
731-A-6, Interchanging master clutch.  
731-A-8, Shutter and deflector door.  
731-A-12, Throw-out bearings.  
731-A-13, Continental R975 engines and generators.  
731-E-4, Change rear door strap.

TC's  
47-(1943) Bogie wheel grease leaks (See TM 700-41)  
59-(1943) Descending steep grades  
61-(1943) Operation  
TM's  
9-731E, Organizational Maintenance

WDC's  
60 (1943), Correct installation of ammunition boxes and brackets.

### CARRIAGE, MOTOR, 75 MM HOWITZER, M8

FSMWO's  
G127-W1, Air cleaner system.  
G127-W2, Clevises for towing pintle.  
G126-W4, Sand shields for top of tracks.  
G127-W5, Seal engine against entrance of dust.  
G127-W6, Towing pintles.  
G127-W7, Improve operation of hydraulic transmission.  
G127-W8, Transfer unit.  
G127-W9, Remove fire detector system.

OFSB's  
6-G 120A, Lubrication.  
6-G 127, Lubrication instructions.  
SNL's  
G-127, OSPE (3 Nov. 43)  
G-127, OSPE (Temp. C1)

G-127, OSPE C1 (18 Nov. 43)  
G-127, OSPE C1 and C2 (3 Sept. 43)  
G-127, OSPE (including C1)  
G-127 Part 2, SPC (1 May 43)

TB's  
700-80, Periodic check of pioneer compasses.  
700-85, Rubber tired trailing idler wheel.  
700-90, Towing pintles.  
700-98, Fire detector.  
700-107, Checking of compasses.  
727C-2, Position of selector level in transit.  
727C-11, Cleaning of transfer unit oil cooler.  
727C-12, Modification in engine sling.  
727C-13, Paper gasket for sponson door.  
727C-14, Steering brake link pin.  
727C-1, Sighting equipment.  
1727C-2, Transmission group assemblies.  
1727D-1, Servicing transfer unit oil cooler.  
732B-1, Sighting equipment.  
TC's  
44 (1943) Final drive installation (See TB 727C-3)  
TM's  
9-1727C, Hydromatic transmission and propeller shafts.

### CARRIAGE, MOTOR, 3 INCH GUN, M10 AND \*M10A1

FSMWO's  
\*G-1-W2, Clearance for operation of suspension with steel track.  
\*G-1-W4, Insulate accelerator pedal.  
\*G-1-W5, Parking brakes.  
\*G-1-W7, New towing shackle pin.  
\*G-1-W8, Hand grenade boxes and clutch pedal guard.  
G130-W1, Prevent clutch failure.  
G130-W2, Throttle.  
G130-W4, Balanced air flow.  
G130-W6, Rifle bracket.  
G130-W8, Panoramic sight box.  
G139-W9, Oil strainer.  
G130-W10, 3-inch gun solenoid.  
G130-W11, Fan drive gear.  
G130-W12, Clutch linkage.  
G130-W13, Heavier turret plates and turret traversing lock.  
G130-W14, Improvement to fuel system.  
G130-W17, Pads on turret plates.  
\*G170-W1, Cancelled by C1.  
\*G170-W3, Improvement to fuel system.  
\*G170-W4, Heavier turret traversing locks.  
\*G170-W5, Generator regulator and filter.  
G170-W6, Hold ammunition in racks.  
\*G170-W9 Pads on turret plates  
\*G170-W10, Over center clutch spring.  
\*G170-W7, Oil trough assemblies.  
\*G170-W12, Intake manifold and head gaskets.

OFSB's  
6-G-130 Lubrication instructions.  
6-G-170 Lubrication instructions.

SNL's  
\*G130 OSPE (5 Dec. 43)  
\*G130 OSPE Temp. C1  
\*G130 OSPE C1 (5 Sept. 43)  
\*G130 OSPE including C1.  
\*G130 OSPE Vol. XIII, Part 2  
\*G130 OSPE C2 (20 Oct. 43)  
\*G130 SPC (1 July 43)  
\*G170 OSPE  
\*G170 OSPE C1 (4 Sept. 43)  
\*G170 OSPE C2 (19 Nov. 43)  
\*G170 OSPE, Pt. 2, SPC (1 July 43)  
\*G170 OSPE, Addendum (10 March 43)

TB's  
\*700-51, Flame detector.  
\*700-57, Transmission oil return line.  
\*700-70, Hub sprocket capscrew.  
\*700-72, Bogie Wheel bearings and seals.  
\*700-80, Periodic check of pioneer compasses.  
\*700-90, Towing pintles.  
\*700-91, Fuel tank filler neck, strainer, seal, and vent.  
700-92, Types of injectors  
\*700-106, Replacement of steel tracks.  
\*700-107, Checking of compasses.  
731B-2, Radio antenna breakage.  
731B-3, Clarification of master switch circuit.  
731B-4, Governor weight housing caps.  
731-G4, Rear engine compartment door bolts.  
731-G5, Cylinder head gasket.  
\*731-G-6, Gasket, Cylinder head, Ford GAA engine.  
\*731-G-7, Spark plug inserts.  
\*731-G-8, Camshaft, Ford GAA engine.  
\*731-G-9, Cleaning crankcase breathing element Ford GAA engine.  
\*731-G-10, Cylinder head, gasket Ford GAA engine.  
\*731-G-11, Radio Antenna Breakage.  
\*723-3-inch Gun M7 Cocking fork plunger assy.  
752A-1, Sighting equipment.  
753-2, Fuel pump tube failure.  
731B-2, Crankcase breather elbow.

TC's  
\*47 (1943) Bogie-wheel grease leaks (see TB 700-41)  
\*54 (1943) Importance of locking turret (see TB 731G-2)  
\*59 (1943) Descending steep grades: Also removal of water from engine compartment.  
TM's  
9-731-G, Operation and Maintenance.

### CARRIAGE, MOTOR, 155 MM. GUN, M12

FSMWO's  
G-1-W4, Insulate accelerator pedal.  
G-1-W7, Towing shackle pin.  
G-158, W1 Installing screen in fuel relief valve.  
G-158, W2 Valve parts in fuel pump.  
G-158, W3 Ventilated clutch.  
G-158, W4 Clutch release bearing.  
G-158, W5 Ammunition bar clamp assemblies.  
G-158, W7 Install clutch booster.  
G-158, W9 Install new type fuel cut-off solenoid connecting rod.

OFSB's  
G-6-158 Lubrication instruction.  
SNL's  
G-158 OSPE (8 Sept. 43)  
G-158 OSPE, C1 (23 Oct. 43)  
G-158 OSPE (with C1)  
G-158 OSPE C2 (8 Nov. 43)  
G-158 OSPE C3 (23 Nov. 43)  
TB's  
700-39, Radial engine.  
700-51, Flame detector.  
700-52, New type cam assembly.  
700-53, Magneto timing change.  
700-57, Transmission oil return line.  
700-70, Hub sprocket capscrew.  
700-72, Bogie wheel bearings and seals.  
700-80, Periodic check of pioneer compasses.  
700-86, Lubrication of master clutch, spindle ball and roller bearings.

700-90, Towing pintles.  
700-91, Fuel tank filler neck strainer, seal, and vent.  
700-94, Dust accumulation in clutch.  
700-106, Replacement of steel tracks.  
700-107, Checking of compasses.  
731-A-12, Throwout bearing.  
731-A-13, Continental R975 engines and generators.  
751-1 Caution sign.

TC's  
47 (1943) Bogie grease leaks. (See TB 700-41)  
59 (1943) Descending steep grades.

#### CARRIAGE, MOTOR, MULTIPLE GUN M13

FSMWO's  
G-102-W42 Gun mount.  
OFBS's  
6-G-147A Lubrication.  
SNL's  
G102-OSPE  
G102-OSPE, Vol. 12 (24 July 43)  
G102-OSPE, Vol. 12 C1 (14 Dec. 43)  
G102-OSPE, Sec. 1 A Parts change directory (24 Dec. 42)  
G102-OSPE, Sec. 13 Engine group (1 Jan. 43)  
G102-OSPE, Sec. 22, Steering group (1 Jan. 43).  
G102-OSPE, Sec. 26 Piece mark conversion list. (4 Feb. 43)

TB's  
700-45 Fuel Sediment bowl.  
700-47 Service limit bogie rollers.  
700-54 Tire repair kit.  
700-105 Tire lock removing tool.

#### CARRIAGE MOTOR, MULTIPLE GUN, M14

FSMWO's  
G147-W1, Starter caution plate.  
G147-W3, Prevent leakage of gear lubricant into wheel bearing compartment and brakes.  
G147-W6, Cooling system.  
G147-W7, Reinforce radiator louver control lever.  
G147-W9, Gun mount.  
SNL's  
G147 OSPE Vol. 5 (29 July 43)  
G147 OSPE Part 11 SPC (1 Sept. 43).

TB's  
707-4 Cylinder head and valve adjustment.

TM's  
9-707, Organizational Maintenance.

#### CARRIAGE, MOTOR, MULTIPLE GUN M15 AND \*M15A1

FSMWO's  
G102-W20, Blackout driving light.  
G102-W27, Install blackout driving light.  
G102-W35, Provide better spring suspension.

OFBS's  
6-G-102C Lubrication.

SNL's  
G102-OSPE, Vol. 12, C1 (14 Dec. 43)  
G102-OSPE, Vol. 13, (17 April 43)  
\*G102-OSPE, Vol. 16, (6 Oct. 43)  
\*G102-OSPE, Vol. 16, C1 (6 Nov. 43)  
\*G102-OSPE, Vol. 16, C2 (21 Nov. 43)  
G102-OSPE, Sec. 13, Engine group (1 Jan. 43)  
G102-OSPE, Sec. 22, Steering group (1 Jan. 43)  
G102-OSPE, Sec. 26, Piece mark conversion list (4 Feb. 43)

TB's  
700-45 Fuel Sediment bowl.  
700-47 Service limit bogie roller.  
700-51 Flame detector.  
700-54 Tire repair kit.  
700-64 Door stop angle.  
700-105 Tire lock ring removing tool.

TM's  
9-708, Organizational Maintenance.

#### CARRIAGE, MOTOR, MULTIPLE GUN, M16

FSMWO's  
G102-W42 Gun mount.  
TB's  
700-45, Fuel sediment bowl.  
700-47, Service limit bogie roller.  
700-54, Tire repair kit.  
SNL's  
G-102 OSPE, Vol. 14 (29 Sept. 43)

#### CARRIAGE, MOTOR, MULTIPLE GUN M17

FSMWO's  
147-W1 Starter caution plate.  
147-W3 Prevent leakage of gear lubricant into wheel bearing compartment and brakes.

SNL's  
G147 OSPE, Vol. 6 (27 Sept. 43)  
G147 OSPE, Vol. 6 C1 (27 Oct. 43)

#### CARRIAGE, MOTOR, 105 MM. HOWITZER, T19

FSMWO's  
G102-W23, Bogie volute spring.  
G102-W24, Eliminate Tire Scuffing on hood side armor plate.

SNL's  
G102-OSPE, Vol. 11 (28 July 43)  
G102-Sec. 1 A, Parts change directory (1 Jan. 43)  
G102-Sec. 13, Engine group. (1 Jan. 43)  
G102-Sec. 26, Piece mark conversion lists. (4 Feb. 43)

TB's  
700-45, Fuel sediment bowl.  
700-47, Service limit bogie rollers.  
700-54, Tire repair kit.

#### CARRIER, CARGO M29 (T24)

SNL's  
179 OSPE (8 Nov. 43)  
179 OSPE SPC (1 Aug. 43)  
TM's  
9-772, Operation and Maintenance (19 June 43)

#### CARRIER, CARGO, M30 (Formerly T14)

FSMWO's  
G 158-W2 Valve parts in fuel pump.  
G-158-W3 Ventilated clutch.  
G 158-W4 Clutch release bearing.  
G 158-W5 Ammunition bar clamp.  
G 158-W9 Install new type fuel cut-off solenoid connecting rod.

OFBS's  
6-G-158 Lubrication instructions.  
SNL's  
G 158, OSPE  
G 158, OSPE C1 (23 Oct. 43)  
G 158, OSPE, C2 (8 Nov. 43)  
G 158, OSPE C3 (23 Nov. 43)

TB's  
700-52 New type cam assembly.  
700-53 Magneto timing change.  
700-57 Transmission oil return line.  
700-70 Hub Sprocket capscrew.  
700-86 Lubrication of master

clutch spindle ball, and roller bearings.  
700-87 New rubber blocks on worn rubber tracks.  
700-91 Fuel tank filler neck, strainer, seal, and vent.  
700-94 Dust accumulation in clutch.  
700-106 Replacement of steel tracks.  
731-12 Throwout bearing.  
731-13 Continental R 975 engines and generators.

#### CARRIAGE, MOTOR, 75 MM. HOWITZER, T30

FSMWO's  
G 102-W23 Bogie volute spring.  
G 102-W24 Eliminate tire scuffing on hood side armor plate.  
SNL's  
G 102 OSPE Vol. 10 (28 July 43)  
G 102 Sec. 1A Parts change directory (1 Jan. 43)  
G 102 Sec. 13, Engine group (1 Jan. 43)  
G 102 Sec. 22, Steering group (1 Jan. 43)  
G 102 Sec. 26, Piece mark conversion list (4 Feb. 43)

TB's  
700-45 Fuel sediment bowl.  
700-47 Service limit bogie rollers.  
700-54 Tire repair kit.

#### TANKS, LIGHT

##### M1A1 and M2A4

FSMWO's  
G103-W5, C1, Provide generator bracket.

##### TANK, LIGHT, M3

FSMWO's  
G103-W2 C1, Retain peep-hole protectors in place.  
G103-W5 C1, Provide generator bracket.  
G103-W6 C1, Protectoscope doors.  
G103-W22 Remove sponson machine gun, right and left and mounts.  
G103-W23 Reinforcing hull-roof.  
G103-W25 Blackout driving lights.  
G103-W27 Compass.

OFBS's  
6-G-103 Lubrication instruction.  
SNL's  
G103 OSPE, Vol. 1 (10 Aug. 42)  
G103 OSPE, Vol. 1 C1 (15 July 43)  
G103 OSPE, Vol. 1 LAP C1 (14 April 42)  
G103 OSPE, Vol. 1 C2 (5 July 43)  
G103 OSPE, Vol. 1 Sec. 1, C2 (14 April 42)  
Suppl. 1, Generator gasoline engine. (7 July 42)

TB's  
700-40 Ceramic spark plugs.  
700-50 Track installation.  
700-51 Flame detector.  
700-62 New type bogie wheel lift.  
700-66 Removal of engine.  
700-81 Reversing track end connectors.  
700-96 Steel tracks.  
700-107 Checking of compasses.  
1726-6 Replacement of studs in aluminum parts.

##### TANK, LIGHT, M3A1

FSMWO's  
G103-W23 Reinforcing hull roof.  
G103-W25 Blackout driving lights.  
G103-W27 Compass.  
G103-W29 Turret Stowage.  
G103-W37 Tolerances of bearings on gunner's periscope sight.

OFBS's  
6-G-103 Lubrication instruction.

SNL's  
G103 OSPE Vol. 5 Temp. C1 (19 Feb. 42)  
G103 OSPE Vol. 5, C2 (19 April 43)  
G103 OSPE Vol. 5 C1 (17 Nov. 43)  
G103 Vol. 5 Sec. 1 Ch. 4 Generator gasoline engine (29 Dec. 42)  
G103 Vol. 5 Sec. 1 Ch. 5 Electric starter, gasoline engine (31 Dec. 42)  
G103 Vol. 5 Sec. 1 Ch. 6 Ignition harness, gasoline engine (5 Jan. 43)  
G103 Vol. 5 Sec. 1 Ch. 7 Parts list, C1 (23 Dec. 42)  
G103 Vol. 5 Sec. 1 Ch. 8 Governors, gasoline engine (30 Dec. 42)  
G103 Vol. 5 Sec. 1 Ch. 9 Exhaust connections, gasoline engines (7 Jan. 43)  
G103 Vol. 5 Sec. 1 Ch. 10 Engine support, gasoline engine (7 Jan. 43)  
G103 Vol. 5 Sec. 2 Ch. 5 Governor, Diesel engine (30 Dec. 42)  
G103 Vol. 5 Sec. 3 Ch. 1 Transmission (4 Jan. 43)  
G103 Vol. 5 Sec. 6 Controls (28 Dec. 42)  
G103 Vol. 5 Sec. 7 Ch. 3, LAP, C1, Generator, regulation and generator filler (30 Nov. 42)  
G103 Vol. 5 Sec. 9 Ch. 2 Fuel systems (3 Feb. 43)  
G103 Vol. 5 Sec. 11 Ch. 1, Hull (25 Jan. 43)  
G103 Vol. 5 Sec. 11 Ch. 2, Fire extinguisher (14 Jan. 43)  
G103 Vol. 5 Sec. 12 Ch. 2 Turret traversing mechanism (27 April 43)  
G103 Vol. 5 Sec. 12 Ch. 3 Turret basket (11 Jan. 43)  
G103 Vol. 5 Sec. 13 Auxilliary power generator (6 Jan. 43)  
G103 Vol. 5 Addendum, (Spare parts for ordnance shops)  
G103 Vol. 5, Propellor shaft (25 Jan. 43)

TB's  
700-40 Ceramic spark plugs.  
700-50 Track installation.  
700-51 Flame detector.  
700-62 New type bogie wheel lift.  
700-66 Removal of engines.  
700-80 Periodic check of pioneer compasses.  
700-81 Reversing track end connectors.  
700-85 Rubber tired trailing idler wheel.  
700-90 Towing pintles.  
700-96 Steel tracks.  
700-107 Checking compasses.  
726-C-1 Turret traversing mechanism.  
1726-6 Replacement of studs in aluminum parts.

##### TANK, LIGHT, M3A3

FSMWO's  
G103-W33, Install spacer.  
G103-W37, Tolerances of bearings on gunners periscope sight.  
OFBS's  
6-G-103, Lubrication instruction.  
SNL's  
G103, OSPE, Vol. 5 Sec. 1 Ch. 7 Parts list C1 (23 Dec. 42)  
G103, OSPE, Vol. 7 (2 Sept. 43)  
G103, OSPE, Vol. 7 C1 (2 Nov. 43)  
G103, OSPE, Vol. 7 C2  
G103, OSPE, Vol. 7 Part II, (Preliminary SPC)

TB's  
700-40 Ceramic spark plug.  
700-50 Track installation.  
700-51 Flame detector.  
700-62, New type bogie wheel lift.

700-80, Periodic check of pioneer compasses.  
700-81, Reversing track end connectors.  
700-85, Rubber tired trailing idler wheel.  
700-90, Towing pintles.  
700-96, Steel tracks.  
700-107, Checking compasses.  
726-C-1, Turret traversing mechanism.  
727-C-2, Transmission oil pressure warning light.  
1726-6, Replacement of studs in aluminum parts.

#### TANK, LIGHT, M5

FM's  
17-68 Crew drill.  
FSMWO's  
G103-W28, Seal air cleaner system against dust.  
G103-W35, Seal engine against dust.  
G103-W36, Towing Pintles.  
G103-W37, Tolerances of bearings on gunners periscope sight.  
G103-W38, Improve hydraulic transmission.  
G103-W39, Combination spot and signal light.  
OFSB's  
6-G-103A, Lubrication instruction.  
SNL's  
G103-OSPE, Vol. 2 (3 Oct. 43)  
G103-OSPE, Vol. 2, C1 (3 Nov. 43)  
G103-OSPE, Vol. 2 C2 (3 Nov. 43)  
G103-OSPE, Vol. 2, 8, Part 2 SPC (3 Oct. 43)  
G103-OSPE, Vol. 2, 8 (Par. 1-355) Service parts catalogue (3 Oct. 43)  
G103-OSPE, Vol. 2, 8 (Par. 355-723) Service parts catalogue (3 Oct. 43)  
G103-OSPE, Vol. 2 Sec. 15, Ch. 3. (3 Oct. 43)  
G103-OSPE, Vol. 2 Sec. 21 (3 Oct. 43)  
G103-OSPE, Vol. 2 Addendum (Spare parts for ordnance shops. (12 July 43)  
G103-OSPE, Vol. 5 Sec. 1 Ch. 7 Parts list C1 (23 Dec. 42)

TB's  
700-51 Flame detector.  
700-62 New type bogie wheel lift.  
700-66 Removal of engine.  
700-80 Periodic check of pioneer compasses.  
700-81 Reversing track-end connectors.  
700-85 Rubber tired trailing idler wheel.  
700-90 Towing pintles.  
700-96 Steel tracks.  
700-107 Checking compasses.  
727C-4 Lower front hull plate.  
727C-5 Fuel tank level, auxiliary power plant.  
727C-6 Transmission adjustment.  
732-13 Hydraulic turret traversing mechanism adjustment.  
732-16 Carburetor drain pipes.  
732-17 Fuel tank level, auxiliary power plant.  
732-18 Transmission adjustment.  
732-19 Air-cleaner filter element.  
732B-7, Transmission adjustment.  
1727C-2, Transmission group assemblies.  
1727D-1, Servicing transfer unit oil cooler.  
727C-2 Position of selector lever in transit.  
727C-8 Ignition timing.  
727C-9 Transmission throttle lever.  
727C-10 Fuel tank outlet screw.  
727C-11 Cleaning of transfer unit oil cooler.  
727C-12 Modification in engine sling.  
727C-14 Steering brake link pin.  
727C-16 Tripod brush shield.  
732-11 Hydromatic transmission lubricant.

TC's  
44 (1943) Final drive installation. (See TB 727C-3)

TM's  
9-1727C Hydromatic transmission and propeller shafts.

#### TANK, LIGHT, M5A1

FM's  
17-68 Crew drill.  
FSMWO's  
G103-W28 Seal air cleaner system against dust.  
G103-W31 Sand shield for top of tracks.  
G103-W32, Counter sink telescope hold on gun shield.  
G103-W32, Seal engine against dust.  
G103-W36, Towing pintles.  
G103-W37, Tolerances of bearings on gunner's periscope sight.  
G103-W38, Improve hydraulic transmission.  
G103-W39, Combination spot and signal light.  
G103-W41, Remove fire detector system.  
G103-W44, Differential bushings.  
G103-W55, Control cam, Hydraulic turret traversing mechanism.

SNL's  
G103 OSPE, Vol. 2-8, Part 2, SPC. (3 Sept. 43)  
G103 OSPE, Vol. 5, C2 (18 Oct. 43)  
G103 OSPE, Vol. 5 Sec. 1 Ch. 7 Spare parts list C1.  
G103 OSPE, Vol. 8 (3 Sept. 43)  
G103 OSPE, Vol. 8, C1.  
G103 OSPE, Vol. 8 including C1.  
G103 OSPE, Vol. 8 C3 (3 Nov. 43)

TB's  
700-51 Flame detector.  
700-62 New type bogie wheel lift.  
700-66 Removal of engines.  
700-80 Periodic check of pioneer compasses.  
700-81 Reversing track end connectors.  
700-85 Rubber tired trailing idler wheel.  
700-90 Towing pintles.  
700-96 Steel tracks.  
700-98 Fire detectors.  
700-107 Checking of compasses.  
727-C-2 Position of selector lever in transit.  
727C-5 Fuel tank level auxiliary power plant.  
727C-6 Transmission adjustment (See TB's 732-18, 732B-7.)  
727C-7 Piston improvements.  
727C-8 Ignition timing.  
727C-9 Transmission throttle lever.  
727C-10 Fuel tank outlet screw.  
727C-11 Cleaning of transfer-unit oil cooler.  
727C-12 Modification in engine sling.  
727C-13 Paper gasket for sponson door.  
727C-14 Steering brake link pin.  
727C-16 Tripod bush shield.  
1727C-2 Transmission group assemblies.  
1727D-1 Servicing transfer unit oil cooler.  
732-17, Fuel tank level auxiliary power plant.

TC's  
44 (1943) Inspection procedure, and final drive installation (See TB 727C-3)

TM'S  
9-1727C Hydromatic transmission and propeller shafts.

#### TANK, LIGHT, T9E1

SNL's  
G148 Temp. C1.  
TB's  
700-107 Checking of compasses.

TANK, LIGHT, T7E2  
SNL's  
G-137, Temp. C1 (Nov. 42).

#### TANKS, MEDIUM

##### TANK, MEDIUM, M2—2A1

OFSB's  
6-G-81, Lubrication.  
TANK, MEDIUM, M3  
FSMWO's  
G104-W13, C1, Transmission oil cooling system (cancelled).  
G104-W18-C1 Extension on control lever.  
G104-W29 Reduce vapor lock.  
G104-W31 Magneto.  
G104-W32 Magneto and carburetor  
G104-W33 Engine valve mechanism.  
G104-W34 (including C1) providing long-time lag fuse.  
G104-W45 Blackout driving light.  
G104-W48 Oil tank breather.  
G104-W49 Fuel relief valve screen  
G104-W59 7-Cylinder priming system.

OFSB's  
6-G-104A Lubrication instruction.  
SNL's  
G704, OSPE Vol. 1 (4 Feb. 43)  
G104, OSPE Vol. 1 Temp C1.  
G104, OSPE Vol. 1 C1. (30 July 43)  
G104, OSPE Vol. 1 Sec. 1 Ch. 2 Suppl. 1 LAP Electric starter (25 June 43)  
G104, OSPE Vol. 1 C3, (22 Nov. 43)  
G104, OSPE Vol. 1 C4, (22 Nov. 43)

TB's  
700-34, Cold weather engine oil temperatures.  
700-39, Radial engine.  
700-46, Cast track-support rollers.  
700-50, Track installation.  
700-51, Flame detector.  
700-52, New type cam assembly.  
700-53, Magneto timing change.  
700-57, Transmission oil return line.  
700-59, Interchangeability of head lamps.  
700-66, Removal of engines.  
700-67, Track adjustment.  
700-72, Bogie wheel bearings and seals.  
700-80, Periodic check of pioneer compasses.  
700-81, Reversing track end connectors.  
700-87, New rubber blocks on worn rubber tracks.  
700-107, Checking of compasses.  
731A-6, Interchanging master clutch.

TC's  
47 (1943) Bogie wheel grease leaks. (See TB 700-41)  
59 (1943) Descending steep grades.  
61 (1943) Operation.

##### TANK, MEDIUM, M3A1 AND \*M3A2—\*M3A4—\*M3A5

FSMWO's  
\*G104-W31, Magneto  
\*G104-W32, Magneto and carburetor.  
\*G104-W33, Engine valve mechanism.  
G104-W34 (including C1), Providing long-time lag fuse.  
\*G104-W48, Oil tank breather.  
G104-W49, Fuel relief valve screen.  
G104-W59, 7-Cylinder priming system.

OFSB's  
\*6-G-104A, Lubrication instruction.

SNL's  
\*G104, OSPE, Vol. 12. (5 March 43)  
G104, OSPE, Vol. 12, Temp. C1

(1 July 43)  
\*G104, OSPE, Vol. 12, C1 (30 July 43).  
G104, OSPE, Vol. 12, C2 (22 Oct. 43)  
\*G104, OSPE, Vol. 12, C3 (22 Nov. 43)

TB's  
700-34 Cold weather engine oil temperature.  
700-39 Radial engine.  
700-46, Cast track support roller.  
700-50, Track installation.  
\*700-51, Flame detector.  
\*700-52, New type cam assembly.  
\*700-53, Magneto timing change.  
700-66, Removal of engines.  
700-67, Track adjustment.  
\*700-72, Installation bogie wheel bearings and seals.  
\*700-80, Periodic check of pioneer compasses.  
\*700-81, Reversing track end connectors.  
\*700-107, Checking of compasses.  
731A-6, Interchanging master clutch.  
700-87, New rubber blocks on worn rubber tracks.

TC's  
\*47 (1943) Bogie wheel grease leaks. (See TB 700-41)  
59 (1943) Descending steep grades.

##### TANK, MEDIUM, M3A3

FSMWO's  
G104-34 (including C1) Providing long-time fuse.  
G104-W38, Balanced air flow.  
G104-W41, Cooling system and air cooler.  
G104-W42, Throttle.  
G104-W52, Oil strainer.  
G104-W58, Heavier clutch spring.  
G104-W72, Clutch linkage.  
OFSB's  
6-G-104F, Lubrication instructions.  
SNL's  
G104, OSPE, Vol. 5 (20 July 43).  
G104, OSPE, Vol. 5 C1 (26 July 43).  
G104, OSPE, Vol. 5 C2 (20 Oct. 43).  
G104, OSPE, Vol. 13, Part 2. (1 Feb. 43).

TB's  
700-46, Cast track support roller.  
700-51, Flame detector.  
700-66, Removal of engines.  
700-67, Track adjustment.  
700-72, Bogie wheel bearings and seals.  
700-80, Periodic check of pioneer compasses.  
700-81, Reversing track end connectors.  
700-87, New rubber blocks on worn rubber tracks.  
700-92, Types of injectors.  
700-107, Checking compasses.  
731B-2, Crankcase breather elbow.  
731B-4, Governor weight housing cap.  
753-2, Fuel pump tube failures.

TC's  
47 (1943), Bogie wheel grease leaks (See TB 700-41).  
59 (1943) Descending steep grades

##### TANK, MEDIUM, M3A4

FSMWO's  
G104-W34 (including C1), Providing long-time lag fuses.  
OFSB's  
6G-104C, Lubrication instructions.  
SNL's  
G104, OSPE, Vol. 3 (20 July 43).  
G104, OSPE, Vol. 3 C1 (26 July 43).

TB's  
700-46, Cast track support roller.  
700-51, Flame detector.  
700-72, Bogie wheel bearings and seals.  
700-80, Periodic check of pioneer compasses.

700-81, Reversing track end connectors.  
700-87, New rubber blocks on worn rubber tracks.  
700-107, Checking compasses.  
TC's  
47 (1943), Bogie wheel grease leaks. (See TB 700-41.)  
59 (1943) Descending steep grades

#### TANK, MEDIUM, M3A5

FSMWO's  
G104-W34 (including C1), Providing long-time lag fuse.  
G104-W42, Throttle.  
G104-W52, Oil strainer.  
G104-W58, Heavier clutch spring, eliminate clutch failure, and shim removal.  
G104-W41, Cooling system and air cooler.  
G104-W66, Fan drive gear.  
G104-W72, Clutch linkage.  
OFSB's  
6-G104-F, Lubrication instruction.  
SNL's  
G104-OSPE, Vol. 10 (4 Feb. 43).  
G104-OSPE, Vol. 10, Temp. C1 (20 July 43).  
G104-OSPE, Vol. 10 C1 (26 July 43).  
G104-OSPE, Vol. 10 C2 (20 Oct. 43).  
G104-OSPE, Vol. 13 Part II (7 Oct. 43).

#### TB's

700-46, Cast track support rollers.  
700-51, Flame detector.  
700-66, Removal of engines.  
700-67, Track adjustment.  
700-72, Bogie wheel bearings and seals.  
700-80, Periodic check of pioneer compasses.  
700-81, Reversing track end connectors.  
700-87, New rubber blocks on worn rubber tracks.  
700-92, Types of injectors.  
700-107, Checking of compasses.  
731-B-2, Crankcase breather elbow.  
731-B-4, Governor weight housing cap.  
753-2, Fuel pump tube failure.

#### TC's

47 (1943), Bogie wheel grease leaks (See TB 700-41).

#### TANK, MEDIUM, M4 AND

##### \*M4A1

#### FM's

17-67, Crew drill and Service of the Piece.

#### FSMWO's

G1-W2, Clearance for operation of suspension with steel track.  
\*G1-W4, Insulate accelerator pedal.  
\*G1-W5, Parking brake.  
\*G1-W7, Towing shackle pin.  
\*G104-W31, Magneto.  
\*G104-W32, Magneto and carburetor.  
\*G104-W33, Engine valve mechanism.  
\*G104-W34 (including C1), Providing long-time lag fuse.  
G104-W46, Periscope wiper.  
\*G104-W47, Canteen rack.  
\*G104-W48, Oil tank breather.  
\*G104-W49, Fuel relief valve screen.  
\*G104-W50, Clutch release bearing  
G104-W51, Turret hatch.  
\*G104-W53, Lock for CAL. 30 machine gun.  
\*G104-W55, Control cam hydraulic turret traversing mechanism.  
\*G104-W56, Ventilation.  
\*G104-W57, Turret.  
\*G104-W59, 7-Cylinder priming system.

\*G104-W61, Ventilated clutch.  
\*G104-W63, Fuel system modification.  
\*G104-W64, Sand shield for tracks  
\*G104-W65, Valve parts in fuel pump.  
\*G104-W67, Lock turret doors.  
\*G104-W69, Driver's compass.  
\*G104-W71, Crash padding.  
\*G104-W73, Equilibrator door spring.  
\*G104-W74, Install azimuth indicator.  
\*G104-W75, Hatch lock.  
\*G104-W77, Auxiliary generator exhaust tube.  
\*G104-W78 AC, Pump and adapter.  
G104-81, Turret basket.  
\*G104-82, Turret traveler switch.  
\*G104-W83, Reinforce hull.  
G104-W85, Over-center clutch spring.  
\*G104-W86, Air and exhaust deflector.  
\*G104-W88, Install ventilating blower assy.  
\*G104-W89, Muffler bracket.  
\*G104-W90, Prevent oil foaming.  
\*G104-W91, Check tolerances of bearings on gunner's periscope sight.  
\*G104-W92, Combination spot and signal light.  
G104-W94, Vane sight.  
\*G104-W96, Foot rest for firing switch.  
\*G104-W97, Firing solenoid.  
\*G104-W103, Remove fire detector system.  
\*G104-W104, Install new type fuel cut-off solenoid connecting rod.

#### OFSB's

\*6-G-104E, Lubrication instruct'n.  
\*6-G-104E, C1 Lubrication.

#### SNL's

G104, OSPE, Vol. 6, Sec. 1 Preface and Index (7 Sept. 43).  
G104, OSPE, Vol. 6 (7 Sept. 43).  
G104, OSPE, Vol. 6, SPC (15 May 43).  
G104, OSPE, Vol. 6, C1, (22 Oct. 43).  
G104, OSPE, Vol. 6, C2.  
G104, OSPE, Vol. 6 (with C1 and C2).  
G104, OSPE, Vol. 6, C3.  
G104, OSPE, Vol. 6, Suppl. 1 (25 May 43).  
G104, OSPE, Vol. 7, Sec. 23, Turret traversing mechanism.

#### TB's

\*700-34, Cold weather engine oil temperatures.  
\*700-35, Differences between M4 and M4A1.  
\*700-36, Circuit breaker reset button.  
\*700-39, Radial engines.  
\*700-46, Cast track support roller.  
700-48, Crowbar bracket location.  
\*700-49, Clutch pedal interference.  
\*700-50, Track installation.  
\*700-51, Flame detector.  
700-52, New type cam assembly.  
700-53, Magneto timing change.  
700-59, Interchangeability of headlamp.  
\*700-66, Removal of engines.  
\*700-67, Track adjustment.  
700-70, Replacement of hub sprocket.  
\*700-72, Bogie wheel bearings and seals.  
\*700-80, Periodic check of pioneer compasses.  
\*700-81, Reversing track end connectors.  
\*700-86, Lubrication of master clutch, spindle ball and roller bearings.  
\*700-87, New rubber blocks on worn rubber tracks.  
\*700-90, Towing pintles.  
\*700-91, Fuel filler neck strainer, seal and vent.

\*700-94, Dust accumulation in clutch.  
\*700-98, Fire detector.  
\*700-106, Replacement of steel tracks.  
\*700-107, Checking of compasses.  
731A-5, Removal of weld from final drive sprocket screw.  
731A-6, Interchanging master clutch.  
731A-7, Oil level gage.  
\*731A-8, Shutter and deflector door.  
\*731A-9, Auto pulse auxiliary fuel pump.  
\*731A-10, Auto-lite generator regulations.  
\*731A-11, Fuel line and accelerator control rod.  
\*731A-12, Throwout bearing.  
\*731A-13, Continental R975 engines and generators.  
TC's  
\*47 (1943) Bogie wheel grease leaks (See TB 700-41)  
\*59 (1943) Descending steep grades.  
61 (1943) Operations.

#### WDC's

60 (1943) Correct installation of ammunition boxes and brackets.

#### SNL's—M4A1

G-104, OSPE, Vol. 2 (7 Sept. 43).  
G-104, OSPE, Vol. 2 C1 (8 Sept. 43).  
G-104, OSPE, Vol. 2, C2 (8 Sept. 43).  
G-104, OSPE, Vol. 2, Sec. 1 Preface and index (7 Sept. 43).  
G-104, OSPE, Vol. 2, Addendum (10 Sept. 43).  
G-104, OSPE, Vol. 2, Sec. 11 LAP gasoline engines. (4 June 43).  
G-104, OSPE, Vol. 2, SPC (15 May 43).  
G-104, OSPE, Vol. 1 (4 Feb. 43).  
G-104, OSPE, Vol. 7, Part 2, SPC (15 July 43).

#### TANK, MEDIUM, M4A2

#### FSMWO's

G1-W4, Insulate accelerator pedal.  
G1-W5, Parking brake.  
G1-W7, Towing shackle pin.  
G104-W34, (including C1) Providing long-time lag fuse.  
G104-W38, Balanced air flow.  
G104-W41, Cooling system and air cleaner.  
G104-W42, Throttle.  
G104-W47, Canteen racks.  
G104-W52, Oil strainer.  
G104-W53, Lock for Cal. 30 Machine gun.  
G104-W55, Control cam, hydraulic turret traversing mechanism.  
G104-W56, Ventilation.  
G104-W58, Heavier clutch spring, eliminate clutch failure and shim removal.  
G104-W63, Fuel system modification.  
G104-W64, Sand shield for tracks.  
G104-W66, Fan drive gear.  
G104-W67, Lock turret doors.  
G104-W69, Drivers compasses.  
G104-W72, To modify clutch linkage.  
G104-W73, Equilibrator door springs.  
G104-W74, Install azimuth indicator.  
G104-W77, Auxiliary generator exhaust tube.  
G104-W81, Turret basket.  
G104-W82, Turret traveler switch.  
G104-W83, Reinforce hull.  
G104-W91, Check tolerances of bearings on gunner's periscope sight.  
G104-W92, Combination spot and signal light.  
G104-W94, Vane sight.

G104-W96, Foot rest for firing switch.  
G104-W97, Firing solenoid.  
OFSB's  
6-G-104D, Lubrication instruct'ns.  
SNL's  
G104, OSPE, Vol. 7 (5 Sept. 43).  
G104, OSPE, Vol. 7, C1 (20 Oct. 43).  
G104, OSPE, Vol. 7, C2 (20 Nov. 43).  
G104, OSPE, Vol. 7, C3 (25 Nov. 43).  
G104, OSPE, Vol. 7, Part 2, SPC (15 July 43).  
G104, OSPE, Vol. 7, Sec. 10 Electrical system (turret) (20 Nov. 43).  
G104, OSPE, Vol. 7, Sec. 23, C2 Turret traversing mechanism (20 Nov. 43).  
G104, OSPE, Vol. 7, Sec. 23, C3 Turret traversing mechanism (25 Nov. 43).  
G104, OSPE, Vol. 8, Part 2 (4 Sept. 43).  
G104, OSPE, Vol. 13, Part 2 (1 Aug. 43).

#### TB's

700-36, Circuit breaker reset button.  
700-46, Cast track support roller.  
700-48, Crowbar bracket location.  
700-49, Clutch pedal interference.  
700-51, Flame detector.  
700-66, Removal of engine.  
700-67, Track adjustment.  
700-72, Bogie wheel bearings and seals.  
700-80, Periodic check of pioneer compasses.  
700-81, Reversing track end connectors.  
700-87, New rubber blocks for worn rubber tracks.  
700-90, Towing pintles.  
700-91, Fuel tank filler neck, strainer, seal, and vent.  
700-92, Types of injectors.  
700-106, Replacement of steel tracks.  
700-107, Checking of compasses.  
731B-2, Crankcase breather elbow.  
731B-3, Clarification of master switch circuit.  
731B-4, Governor weight housing cap.  
753B-2, Fuel pump tube failure.  
TC's  
44 (1943) Bogie wheel grease leaks. (See TB 700-41)  
59 (1943) Descending steep grades also water in engine compartment.

#### TM's

9-731B, Organizational Maintenance.

#### TANK, MEDIUM, M4A3

#### FSMWO's

G1-W4, Insulate accelerator pedal.  
G1-W5, Parking brake.  
G1-W7, Towing shackle pin.  
G104-W34 (including C1), Provide long-time lag fuse.  
G104-W47, Canteen racks.  
G104-W53, Lock for Cal. 30 machine guns.  
G104-W54, Oil filter thrust collar (engines W serial \*below 1149)  
G104-W55, Control cam hydraulic turret traversing mechanism.  
G104-W56, Ventilation.  
G104-W63, Fuel system modification.  
G104-W64, Sand shield for tracks.  
G104-W67, Lock turret doors.  
G104-W69, Drivers compass.  
G104-W71, Crash padding.  
G104-W73, Equilibrator door springs.  
G104-W74, Install azimuth indicator.  
G104-W77, Auxiliary generator exhaust tube.

G104-W79, Generator regulator and filter.  
G104-W80, Lubrication magneto drive.  
G104-W81, Turret basket.  
G104-W82, Turret traveler switch.  
G104-W83, Reinforce hull.  
G104-W85, Over-center clutch spring.  
G104-W88, Install ventilating blower assy.  
G104-W91, Check tolerances of bearings on gunner's periscope sight.  
G104-W92, Combination spot and signal light.  
G104-W94, Vane sight.  
G104-W96, Foot rest for firing switch.  
G104-W97, Firing solenoid.  
G104-W101, Intake manifold and head gasket.  
G104-W103, Remove fire detector system.

**OFSB's**

6-G-104G, Lubrication.

**SNL's**

G104, OSPE, Vol. 7, Sec. 23, C3 Turret traversing mechanism.  
G104, OSPE, Vol. 8 (4 Sept. 43).  
G104, OSPE, Vol. 8, Temp. C1, engine (20 July 43).  
G104, OSPE, Vol. 8, C1 (29 July 43).  
G104, OSPE, Vol. 8, C2 (29 July 43).  
G104, OSPE, Vol. 8, Addendum (spare parts for ordnance shop) (29 July 43).

**TB's**

700-36, Circuit breaker reset button.  
700-46, Cast track support roller.  
700-48, Crowbar bracket location.  
700-49, Clutch pedal interference.  
700-51, Flame detector.  
700-66, Removal of engine.  
700-67, Track adjustment.  
700-72, Bogie wheel bearings and seals.  
700-80, Periodic check of pioneer compasses.  
700-81, Reversing track end connectors.  
700-87, New rubber blocks on worn rubber tracks.  
700-90, Towing pintles.  
700-91, Fuel tank filler neck, strainer, seal, and vent.  
700-98, Fire detector.  
700-106, Replacement of steel tracks.  
700-107, Checking of compasses.  
731G-5, Cylinder head gasket.  
731G-6, Gasket cylinder head Ford GAA engine.  
731G-7, Spark plug inserts.  
731G-8, Camshaft Ford GAA engine.  
731G-9, Cleaning crankcase breather element Ford GAA engine.  
731G-10, Cylinder head gasket Ford GAA engine.  
731A-10, Auto-Lite generator regulators.

**TC's**

47 (1943) Bogie wheel grease leaks. (See TB 700-41)  
59 (1943) Descending steep grades.

**TANK, MEDIUM, M4A4**

**FSMWO's**

G1-W5, Parking brakes.  
G104-W34, (including C1) Providing long-time lag fuse.  
G104-W47, Canteen racks.  
G104-W53, Lock for Cal. 30 machine gun.  
G104-W56, Ventilation.  
G104-W60, Ventilated clutch and fan.  
G104-W63, Fuel system modification.

G104-W64, Sand shield for tracks.  
G104-W67, Lock turret doors.  
G104-W73, Equilibrator door springs.  
G104-W74, Install azimuth indicator.  
G104-W75, Hatch lock.  
G104-W77, Auxiliary generator exhaust tube.  
G104-W82, Turret traveler switch.  
G104-W83, Reinforce hull.  
G104-W90, Prevent oil foaming.  
G104-W91, Check tolerances of bearings on gunner's periscope sight.  
G104-W92, Combination spot and signal light.  
G104-W96, Install foot rest for firing switch.  
G1-W5, Parking brake.  
G104-W97, Firing solenoid.

**OFSB's**

6-G-104-G, Lubrication instructions.

**SNL's**

G104, OSPE Vol. 9 (6 Sept. 43).  
G104, OSPE Vol. 9 Temp. C1.  
G104, OSPE Vol. 9 C1.  
G104, OSPE Vol. 9, C3.  
G104, OSPE Vol. 9, Sec. 1, Preface and index.  
G104, OSPE Vol. 9, Part 2, SPC (20 July 43).  
G104, OSPE Vol. 9, Sec. 1, C1, LAP.  
G104, OSPE Vol. 9, Sec. 4 LAP, Exhaust group.  
G104, OSPE Vol. 9, Sec. 5 LAP, Control of tanks.  
G104, OSPE Vol. 9, Sec. 6, Cooling system.  
G104, OSPE Vol. 9, Sec. 16, LAP Instruments.  
G104, OSPE Vol. 9, Sec. 20, LAP Track suspension group.  
G104, OSPE Vol. 9, Sec. 21, Transmission.  
G104, OSPE, Vol. 7, Sec. 23, C3 ret.  
G104, OSPE, Vol. 7, Sec. 23, C3, Turret traversing mechanism.  
G104, OSPE Vol. 9, Addendum (Spare Parts for Ordnance Shop). (6 Feb. 43).

**TB's**

700-36, Circuit breaker reset button.  
700-46, Cast track support roller.  
700-48, Crowbar bracket location.  
700-49, Clutch pedal interference.  
700-66, Removal of engines.  
700-67, Track adjustment.  
700-80, Periodic check of pioneer compasses.  
700-86, Lubrication of master clutch, spindle ball and roller bearings.  
700-87, New rubber blocks on worn rubber tracks.  
700-90, Towing pintles.  
700-91, Fuel tank filler neck, strainer, seal, and vent.  
700-94, Dust accumulation in clutch.  
700-106, Replacement of steel tracks.  
700-107, Checking of compasses.  
754-2, Adjustment of oil-pressure gage sending unit.  
754-3, Bogie wheel grease leaks.

**TC's**

44 (1943), Difference in fuel pump. (See TB 700-41.)  
59 (1943), Descending steep grades

**TM's**

9-754, Organizational Maintenance.

**TANK, MEDIUM, M4A6**

**FSMWO's**

G104-W74, Install azimuth indicator.  
G104-W91, Check tolerances of bearings on gunner's periscope sight.

G104-W97, Firing solenoid.

**SNL's**

G104, OSPE Vol. 13 (7 Oct. 43).  
G104, OSPE Vol. 13, SPC (22 June 43).

**TB's**

700-80, Periodic check of pioneer compasses.  
700-87, New rubber blocks on worn rubber tracks.  
700-90, Towing pintles.  
700-91, Fuel tank filler neck, strainer, seal, and vent.  
700-106, Replacement of steel tracks.  
700-107, Checking compasses.

**TANK, MEDIUM, M7**

**OFSB's**

6-G-137, Lubrication instructions.

**TB's**

700-34, Cold weather engine oil temperatures.  
700-39, Radial engines.  
700-46, Cast track support rollers.  
700-50, Track installation.  
732 A-1, Cylinder head baffle adjustment.  
732 A-2, Fluid for torque converter.

**TC's**

47 (1943), Bogie wheel grease leaks. (See TB 700-41.)

**TANK, RECOVERY, M31B1—M32, M32B1**

**TB's**

731 A-13, Continental R975 engine and generators.  
731 B-4, Governor weight housing caps.

**TANKS, HEAVY**

**TANK, HEAVY, M6 AND**

**\*M6A1**

**OFSB's**

\*6-G-118, Lubrication instruction.

**SNL's**

G118, OSPE, Vol. 1 (9 Sept. 43).  
\*G118, OSPE, Vol. 2 (9 Sept. 43).  
G118, OSPE, Vol. 1, Addendum (18 Feb. 43).  
\*G118, OSPE, Vol. 2, Addendum (10 March 43).  
\*G118, OSPE, Vol. 2, Part 2, SPC (4 Feb. 43).

**TM's**

\*9-721, Organizational Maintenance.

**TANK, RECOVERY, T2 (DIESEL)**

**FSMWO's**

G169-W3, Fan drive gear.  
G169-W4, Transfer case drain and filter plug.  
G169-W52, Oil strainer.  
G169-W63, Fuel system modification.

**OFSB's**

6-G169, Lubrication.

**SNL's**

G-169, OSPE (17 Sept. 43).  
G-169, OSPE, C1 (2 Nov. 43).

**TB's**

700-70, Hub sprocket capscrew.  
700-72, Bogie wheel bearings and seal.  
700-91, Fuel tank filler neck, strainer, seal, and vent.  
700-92, Types of inflectors.  
700-106, Replacement of steel tracks.

**TM's**

9-739, Operation and maintenance (11 Aug. 43).

**TRUCKS**

**ALL WHEELED VEHICLES**

**OFSB's**

4-21, Gun mounts.

**TB's**

700-105, Tire lock ring removing tool.  
800-21, Pintle hook latch pin.

**TRUCK, 1/4-TON—4x4 (WILLYS) FORD**

**FSMWO's**

G503-W1, Surge tank.  
G503-W2, Provide lighting current for trailers.  
G503-W5, Extra 12 volts, generator assembly and power take-off and 2 extra 6-volt batteries.

**OFSB's**

6-G-503, Lubrication.

**SNL's**

G503, OSPE (8 June 43).  
G503-1, Rear body panel reinforcement.  
G503-2, Carburetor air cleaner tube.  
G503-3, Alinement of carburetor air cleaner tube.

**TB's**

10-1206-1, Grease gun adapter.

**TRUCK, 1/2-TON—4x4 (DODGE)**

**FSMWO's**

G505-W1, Change to 4x2.

**OFSB's**

6-G-505, Lubrication.

**SNL's**

G-505, OSPE (5 Oct. 43).

**TB's**

10-1000-4, Step-up washer on front axle.

**TRUCK, 3/4-TON—4x4 (DODGE)**

**FSMWO's**

G502-W2, C1, Increase leg room.  
G502-W4, Ambulance litter bracket.  
G502-W5, Relocate fuel line.  
G502-W6, Rear axle drive gear thrust pad.  
G502-W10, Enlarge cross on ambulance.

**OFSB's**

6-G-502, Lubrication.

**SNL's**

G502, OSPE (1 Aug. 43).  
G502, OSPE, C1, Temp. addendum (8 June 43).  
G502, Part 2, SPC (March 43).

**TB's**

801-3, 2nd-Echelon tool sets.  
808-2, Distributor.

**TM's**

9-808, Organizational Maintenance.

**TRUCK, 1 1/2-TON—4x4 (CHEVROLET)**

**FSMWO's**

G506-W1, Shift lever linkage.

**OFSB's**

6-G-506, Lubrication.

**SNL's**

G-506, OSPE, SPC (15 Oct. 43).  
G-506, OSPE (5 May 43).

**TB's**

10-1000-7, Vent cover  
10-1557-1, Front spring rear hanger.  
10-1557-2, Engine rear frame bracket.  
10-1809A-1, Change in electrical system.  
800-16, Brake pedal shift.  
TM's  
10-1208, Parts list (Models G-7103, 7113).  
10-1475, Master parts list.  
10-1557, Maintenance manual.

**TRUCK, 1 1/2-TON—4x2 (FORD, CHEVROLET)**

**FSMWO's**

G540-W1, Oil filler pipe brace.

TM's  
\*10-1321, Maintenance manual  
(Model 5103).  
10-1525, Maintenance manual,  
stake and cargo bodies  
(Models 4403-4409).

**TRUCK, 1 1/2-TON—4x4  
(FORD)**  
TM's  
10-1347, Maintenance manual.

**TRUCK, 1 1/2-TON—4x4  
(GMC)**  
FSMWO's  
G1-W1, Filling gasoline tank to  
capacity.

SNL's  
G-553, OSPE (22 July 43).

**TRUCKS, 1 1/2-TON—6x6 PER-  
SONNEL AND CARGO (DODGE)**  
OFSB's  
6-G-507, Lubrication.  
SNL's  
G-507, OSPE, C1, Temp. Adden-  
dum (2 Feb. 43).

**TRUCK, 2 1/2-TON—6x4 (GMC)**  
SNL's  
G-508, OSPE (21 April 43).  
TB's  
800-9, Spring type radiator  
mounting.

**TRUCK, 2 1/2-TON—6x6 (GMC)**  
FSMWO's  
G508-W1, Sludge ventilation kit.  
G508-W2, Surge tank.  
G508-W3, Air cleaner looseness,  
carburetor breakage.  
G508-W4, Improve fit of pitman  
arm to shaft.  
G508-W5, Heavy duty air cleaner  
(applies only to vehicles  
overseas, on the Alcan  
Highway and at the Desert  
Training Center).  
G508-W8, Steering arm ball on  
banjo-type axle.

OFSB's  
6-G-508, Lubrication instructions.  
SNL's  
G-146, OSPE, Vol. 1, C1 (16 April  
43).  
G-146, OSPE, Vol. 2, C1 (31 May  
43).

TB's  
800-9, Spring type radiator  
mounting.  
801-1, Water in winch worm hous-  
ing.  
801-2, Types of oil pans for "270"  
engine.  
801-3, 2nd-echelon tool sets.  
801-4, Removal of distributor sup-  
pression.  
801-6, Prevention of interference  
between body channels and  
rear tires in vehicles having  
U-shaped cross members.  
1801B-1, Straightening and re-  
inforcing split-type axle  
housing.  
10-1000-20, Clutch pedal adjust-  
ment.

**TRUCK, 2 1/2-TON—6x4 AND  
6x6 (STUDEBAKER)**  
FSMWO's  
G-630-W1, Gas tank brackets.  
OFSB's  
6-G-508A, C1.  
6-G-630, Lubrication.  
SNL's  
G-630, OSPE (12 July 43).  
TB's  
807-2, Cylinder head gasket.  
10-1565-1, Clutch adjustment.  
TM's  
10-1564, Parts list (15 Dec. 43).

**TRUCK, 2 1/2-TON—6x6  
(DODGE)**  
SNL's  
G-507, OSPE (21 July 43).

**TRUCK, 2 1/2-TON—4x2  
DUMP (INTERNATIONAL) K7**  
SNL's  
G-541, OSPE (9 Aug. 43).  
TB's  
800-15, Hydraulic pump.  
TM's  
10-1684, Parts list (14 May 43).

**TRUCK, 4-TON—4x4, CARGO  
(FWD)**  
SNL's  
G-531, OSPE (1 Dec. 43).  
G-531, Sec. 3, Rear axle (also C1)  
(16 Jan. 43).  
G-531, Sec. 4, C1, Body (28 Jan.  
43).  
G-531, Sec. 5, C1, Brakes (23 Jan.  
43).  
G-531, Sec. 7, Cooling system  
(also C1) (23 Jan. 43).  
G-531, Sec. 8, Electrical system  
(also C1) (28 Jan. 43).  
G-531, Sec. 9, C1, Engine (4 Feb.  
43).  
G-531, Sec. 11, C1, Frame (22 Jan.  
43).  
G-531, Sec. 12, C1, Fuel system  
(28 Jan. 43).  
G-531, Sec. 14, Propeller shafts  
(25 Jan. 43).  
G-531, Sec. 16, Steering gear (29  
Jan. 43).  
G-531, Sec. 17, C1, Transfer case  
(19 Jan. 43).  
G-531, Sec. 18, Transmission (also  
C1) (19 Jan. 43).

**TRUCK, 4-TON—6x6  
(DIAMOND T)**  
FSMWO's  
G509-W2, Governor housing.  
OFSB's  
6-G-509, Lubrication.  
SNL's  
G-509, OSPE (28 April 43).  
G-509, OSPE, C1 (28 April 43).  
TB's  
811-1, Spring seat cork.

**TRUCK TRACTOR, 4-5 TON—  
4x4 (COE, AUTOCAR)**  
SNL's  
G-510, OSPE (23 April 43).  
G-513, OSPE (13 Oct. 43).  
TM's  
10-1458, Parts list (Model 94x43).  
10-1568, Parts list.  
10-1569, Maintenance manual.

**TRUCK, 5-TON—6x4 (GMC)**  
TB's  
10-1423-1, Oversize king pins.

**TRUCK, 5-TON—4x2  
(INT. HARVESTER)**  
SNL's  
G-542, OSPE (12 July 43).  
G-542, OSPE, C1 (12 July 43).  
TM's  
10-1682, Parts list (28 May 43).

**TRUCK, 5-TON—4x4  
(COE, MACK)**  
SNL's  
G-639, OSPE (14 Sept. 43).

**TRUCK, 5-TON—6x4 (MACK)  
CHASSIS WRECKER W/CRANE**  
SNL's  
G-652, OSPE (14 Sept. 43).  
Maintenance manual (Mod-  
el LMSW-39).

**TRUCK, 5-6 TON—4x4 (FWD)**  
TM's  
10-1377, Maintenance manual  
(Model SU-COE).

**TRUCK, WRECKING, HEAVY M1  
(CORBITT)**  
FSMWO's  
G63-W2, Tow bar cancelled by  
C1.  
SNL's  
G-63, OSPE, C1 (17 Aug. 43).

**TRUCK, 7 1/2-TON—6x6  
PRIME MOVER (MACK)**  
FSMWO's  
G532-W2, Front brake hose.  
G532-W3, Bearing adjusting dock.  
G532-W4, Hoist hand chain.  
OFSB's  
6-G-535, Lubrication.  
SNL's  
G-532, OSPE (1943 Model,  
w/winch).  
G-532, OSPE, C1 (2 Sept. 43).  
TB's  
814-2, Operating instruction.  
10-1471-1, Position of shifter lever  
ball.  
TM's  
10-1478, Parts list.  
10-1679, Maintenance manual (10  
April 43).

**TRUCK, CARGO, 10-TON—6x4  
(MACK)**  
SNL's  
G-528, OSPE (23 Oct. 43).

**TRUCK, CARGO, 10-TON—6x4  
(WHITE 1064)**  
SNL's  
G-642, OSPE (2 Oct. 43).

**TRUCK, HEAVY WRECKER,  
10-TON—6x6 M1**  
SNL's  
G-63, OSPE, C1 (17 Aug. 43).  
G-116, OSPE, Vol. 1 (Series 1),  
C1 (10 Sept. 43).  
G-116, OSPE, Vol. 2 (Series 2),  
C1 (10 Sept. 43).

**TRUCK, WRECKING, HEAVY,  
M1 (WARD LA FRANCE)**  
FSMWO's  
G116-W1, Lubrication chart hold-  
er (cancelled by C1).  
G116-W2, C1.  
G116-W3, Preserve boom cable.  
OFSB's  
6-G-116, Lubrication instructions.  
SNL's  
G-63, OSPE, C1 (17 Aug. 43).  
G-116, OSPE, Vol. 1, C1 (10 Sept.  
43).  
G-116, OSPE, Vol. 2, C1 (Parts  
and equipment) (10 Sept.  
43).  
G-116, OSPE, Part 2, SPC (15  
Dec. 43).  
TB's  
700-95-3, Synchronizing dual ig-  
nition.

TM's  
9-1795C, Ordnance maintenance  
on crane and winches.  
9-1795D, Ordnance maintenance  
on body and chassis.

**TRUCK, LIFT, M22 (WEAVER)**  
FSMWO's  
G161-W1, Prevent oil leakage.  
OFSB's  
6-G-161, Lubrication instructions.  
SNL's  
G-161, OSPE (7 Aug. 43).  
G-161, OSPE, Part 2, SPC (1  
May 43).  
TM's  
9-762, Organizational maintenance

**TRUCK, BOMB LIFT, M1**  
FSMWO's  
G85-W1, C2, Electric brake pedal  
control.  
G85-W4, C1, Blackout lighting  
(cancelled).  
G85-W5, C1, Blackout lighting  
(cancelled).  
G85-W10, Servicing device for  
bomb lift truck M1.  
OFSB's  
6-G-109, Lubrication instructions.  
SNL's  
G-85, SPC (15 Aug. 43).  
G-85, Vol. 2, C2, Parts and equip-  
ment (10 March 42).  
G-85, Vol. 2, C3 (10 March 42).  
G-85, Vol. 3, Sec. 2, C2, Equip-  
ment (10 March 43).  
G-85 Vol. 3, Sec. 2, C3 (10 March  
43).  
G-189, LAP (15 Sept. 43).

**TRUCK, BOMB SERVICE, M1  
(DIAMOND T)**  
FSMWO's  
G85-W2, Cancelled by C2.  
G85-W8, Blackout lights, can-  
celled by C1.  
OFSB's  
6-G-85, Lubrication instructions.  
6-G-110, Lubrication instructions.  
SNL's  
G-85, Vol. 3, Sec. 2, C2, Equipment  
(19 March 43).

TC's  
79 (1943) Recission of TM 9-762.

**TRUCK, BOMB SERVICE, M6  
(CHEVROLET)**  
FSMWO's  
G85-W10, Securing device for  
bomb lift Truck M1.  
G85-W11, Lube chart holder.  
G85-W13, Provide clearance of  
seat riser cover panel over  
fuel gage unit.

OFSB's  
6-G-115, Lubrication instructions.  
SNL's  
G-85, OSPE, Vol. 4 (10 Mar. 43).  
G-85, OSPE, Vol. 4, C1 (6 June  
43).  
G-85, OSPE, SPC (23 June 43).

**TRUCK, EMERGENCY REPAIR,  
M1**  
FSMWO's  
G61-W1, Lubrication chart holder.

**TRUCK, SMALL ARMS REPAIR,  
M7**  
SNL's  
G-138, OSPE, Vol. 1 (10 Jan. 43).  
G-138, OSPE, Vol. 1, C3 (1 Nov.  
43).  
G-138, OSPE, Vol. 2 (Signal  
Corps models) (10 Jan. 43).

**TRUCK, SPARE PARTS, M15**  
SNL's  
G-144, OSPE, Vol. 1, Load A, C1  
(14 Jan. 43).  
G-144, OSPE, Vol. 2, Load B, C1  
(14 Jan. 43).

**TRUCK, WELDING, M12**  
SNL's  
G-142, OSPE, C1 (10 March 43).

**TRUCK, TOOL AND BENCH,  
M13**  
SNL's  
G-143, OSPE, C1 (13 Nov. 43).

**TRUCK, LIGHT MACHINE SHOP,  
M3 AND M4**  
SNL's  
G-57, OSPE, Vol. 3, C2 (25 Oct.  
43).

**TRUCK, AUTOMOTIVE REPAIR,  
2 1/2-TON—6x6, M8 AND M8A1**  
SNL's  
G-139, OSPE, Vol. 1, Load A (24

Aug. 43).

G-139, OSPE, Vol. 2, Load B (30 Aug. 43).

#### TRUCK, MACHINE SHOP, 2½-TON, M16A1

SNL's  
G-146, OSPE, Vol. 1, C1 (16 April 43).

G-146, OSPE, Vol. 5, Load F (24 Sept. 43).

G-146, OSPE, Vol. 2, C1 (3 May 43).

#### TRUCK, ELECTRICAL REPAIR, 2½-TON, M18 AND M18A1

SNL's  
G-149, OSPE, (4 Sept. 43).

#### TRUCK, INSTRUMENT BENCH, 2½-TON, M23 AND M23A1

SNL's  
G-178, OSPE (16 Sept. 43).

#### TRUCK, VAN AND SHOE RE- PAIR, 10-TON (GERSTENLARGER)

TM's  
10-1315, Parts list and Maintenance manual.

### TRUCK, AMPHIBIAN

#### GENERAL (ALL AMPHIBIAN TRUCKS)

AR's  
65-470-C1, Transportation by water of explosives inflammable and chemical materials.

#### TRUCK, AMPHIBIAN, ¼-TON (FORD)

FSMWO's  
G503-W5, Extra 12-volt generator Assys and power take off and two extra 6-volt batteries.

G504-W4, Watertight seal for deck ventilator and motor cover.  
G504-W5, Voltage regulator and static noise filter.

G504-W6, Transmission and transfer case.

G504-W7, Rear deck motor, motor compartment instrument panel, rear seat hull and coaming, muffler, motor cover, rear compartment fuel line.

G504-W8, Rudder shaft packing box lubrication.

G504-W9, Terminal box and brackets for radio.

G504-W10, Power take off.  
G504-W11, Rifle holder.  
G504-W12, Lubricator filling on propeller shaft packing box.

SNL's  
G-504, OSPE (18 June 43).

TB's  
804-1 Operating instructions.  
804-2 Hull drainage.  
804-3 Protection of wheel grease retainer.

10-1263-5 Spare wheel.

TC's  
47 (1943) Sealing threaded fuel-line connections.

#### TRUCK, AMPHIBIAN, 2½-TON 6x6 (GMC DUKW 353)

FSMWO's  
G501-W2, Cancelled by C1.  
G501-W3, Pump assembly.  
G501-W4, Tire tube.

G501-W5, Floor board winch windshield surf board, hull hatch cover tarpaulin and rudder anchor.

G501-W7, Coaming top hold down engine hatch seal, fender eyes, etc.

G501-W8, Propeller shaft tunnel, etc.

G501-W9, Bilge pump strainer.

G501-W10, Windshield surf board.  
G501-W11, Hull compasses.  
G501-W13, Tarpaulin bows.  
G501-W14, Toe board drip shield, winch, etc.

G501-W15, Pump impeller.  
G501-W16, Waterproof horn stowage.

G501-W17, Clean windshield wiper handle, caution plate, life preserver jacket.

G501-W18, Provide hull drain plug wrench adapter, etc.

G501-W19, Provide metal board to replace plywood board, etc.

G501-W22, Provide loading, unloading and transportation facilities, etc.

G501-W24, Mounting tool equipment, spare parts.

G501-W27, Strengthening lifting eyes.

OFSB's  
6-G501, Lubrication.

SNL's  
G-501, OSPE (6 June 43).  
G-501, OSPE, SPC (1 June 43).

TB's  
802-2, Floor board.  
802-3, Inspection of winch shear pin hole.

802-4, Corrosion and waterproofing.

TC's  
55 (1943) Hull drainage, ventilation and care (see TB 802-1)

TM's  
9-802, Operation and Maintenance (1 Sept. 43).

### TRUCKS, MISCELLANEOUS

#### TRUCK, PRIME MOVER, 6-TON 6x6

OFSB's  
6-G535, Lubrication

#### TRUCK, 6-TON—6x6, CLOSED CAB—1942-43

SNL's  
G-531, OSPE (1 Dec. 43).

#### TRUCK, 6-TON—4x2, DIESEL DUMP, 1941 (MACK FWD)

SNL's  
G-640, OSPE (23 Aug. 43).

#### TRUCK, 1941-43 (CHEVROLET)

SNL's  
G-654, SPC, Master parts book (15 Nov. 43).

#### TRUCK, 12-TON—6x6, M20 (DIAMOND T)

TB's  
811-1, Spring seat cork.

#### TRUCK, CRANE, MOUNTED M2

OFSB's  
6-G172, Lubrication.

### TRACTORS

#### TRACTOR, LIGHT (CASE LA1)

SNL's  
G-181, OSPE (19 June 43).

#### TRACTOR, LIGHT, WHEELED INDUSTRIAL TYPE (ALLIS- CHALMERS)

OFSB's  
6-G94, Lubrication.

#### TRACTOR, LIGHT, M2 (CAT. R2)

OFSB's  
6-G68, Lubrication instructions.

#### TRACTOR, LIGHT, M2 (CLE. AG)

OFSB's  
6-G96, Lubrication instructions.

#### TRACTOR, MEDIUM (CATERPILLAR D4)

SNL's  
G-151, OSPE (27 July 43).

#### TRACTOR, MEDIUM, M1 (ALLIS-CHALMERS H D 7W)

SNL's  
G-125, OSPE  
G-125, OSPE, Sec. 8, Electrical system.

G-125, OSPE, Addendum (Spare parts for ordnance shop) (3 Feb. 43).

G-125, OSPE, Sec. 1-10, LAP (16 Aug. 43).

G-125, OSPE, LAP, Supl. 1 (5 Oct. 43)

G-125, OSPE, C1 (22 July 43).

OFSB's  
6-G125, Lubrication instructions

#### TRACTOR, MEDIUM, M1 (INT.) (TD14)

SNL's  
G-132, OSPE

OFSB's  
6-9-132, Lubrication instructions.

#### TRACTOR, MEDIUM, M1 (IHC TD-9 DIESEL) \* (T9 GASOLINE)

SNL's  
G-99, OSPE, (IHC T9, Gasoline) (21 Aug. 43).

G-99, OSPE, (IHC TD-9 Diesel) (21 Aug. 43).

G-99, OSPE, Part 2, SPC (30 July 43).

#### TRACTOR, MEDIUM, M5 (IHC)

SNL's  
G-162, OSPE, C1 (6 Sept. 43).

#### TRACTOR, MEDIUM, 1-TON, M1 (INTERNATIONAL T6) (CRANE)

FSMWO's  
G108-W1, Lubrication chart cancelled by C1.

OFSB's  
6-9-108, Lubrication instructions.

SNL's  
G-108, OSPE (30 March 43).

#### TRACTOR, HEAVY, 6x6 G TX (MINNEAPOLIS-MOLINE)

TM's  
10-1408, Parts list.  
10-1409, Maintenance Manual.

#### TRACTOR, HEAVY, M1 (ALLIS-CHALMERS)

FSMWO's  
G98-W1, Lube chart holder.  
G98-W3, Engine mounting brackets.

OFSB's  
6-G98, Lubrication, C1.

SNL's  
G-98, OSPE (18 Oct. 43).  
G-98, Sec. 10, LAP, Brake system (30 June 43).

G-98, Sec. 11, LAP, Winch and snatch block group. (12 July 43).

G-101, LAP, C1 (3 Sept. 43)

#### TRACTOR, HEAVY, M1 (CATERPILLAR D7)

OFSB's  
6-G89, Lubrication instructions.

SNL's  
G-126, OSPE, C1 (18 Aug. 43).

TB's  
1786A-1, Hydraulic steering clutch adjustment.

#### TRACTOR, HEAVY, M1 (CATERPILLAR D8)

SNL's  
G-153, OSPE (1 Aug. 43).

#### TRACTOR, HEAVY, M1 (INTERNATIONAL TD-18) AND (TD-18 M4)

SNL's  
G-101, OSPE, C1 (17 Aug. 43).  
G-101, Sec. 1-12, LAP (5 June 43)  
G-101, Sec. 13-21, LAP (5 June 43)  
TB's  
1786C-1 Bevel pinion and gear adjustment.

#### TRACTOR, CRANE, 6-TON, M4

SNL's  
G-126, OSPE (18 Aug. 43).  
G-126 OSPE, C1 (18 Aug. 43).  
G-126, OSPE, C2 (25 Oct. 43).

#### TRACTOR, HEAVY, HIGH SPEED 18-TON, M4 (ALLIS-CHAL- MERS)

OFSB's  
6-G130, Lubrication.

SNL's  
G-150, OSPE, (30 Dec. 43).

G-150, SPC (Sept. 43).  
G-150, OSPE, (15 Sept. 43).

TB's  
785-1, Improved track supporting roller assy's.

785-2, Transmission gear locking.

785-3, Gear shifting.

785-4, Crankcase oil filler.

TM's  
9-785, Operation and maintenance.

#### TRACTOR, CRANE, 2-TON, M3

SNL's  
G-132, OSPE (16 Sept. 43).  
G-132, OSPE, Part 2, SPC (30 April 43).

#### TRACTOR, CRANE, 2-TON, M5

SNL's  
G-99, OSPE (21 Aug. 43).

#### TRACTOR, HIGH SPEED, 13-TON, M5

SNL's  
G-162, OSPE (6 Sept. 43).  
G-162, OSPE, SPC (1 June 43).  
G-162, OSPE, C1 (21 Oct. 43).  
G-162, OSPE, C2 (6 Nov. 43).

#### TRACTOR, HIGH SPEED, 38-TON, M6 (ALLIS-CHAL- MERS)

SNL's  
G-184, OSPE (14 Oct. 43).

#### TRACTOR, CRANE, M6 AND M12

OFSB's  
6-G117, Lubrication instructions.  
SNL's  
G-117, OSPE (7 Sept. 43).

### TRUCK TRACTORS

#### GENERAL PURPOSE VEHICLES

OFSB's  
4-21, Gun mounts.

TB's  
10-1000-27, Lower fifth wheel (applies to 1½-ton 4x2 Ford, 1½-ton 4x2 Chev., 2½-ton 4x4 Autocar, 2½-ton 4x4 GMC, 4-5-ton 4x2 Autocar, 4-5-ton 4x2 Federal, 5-6-ton 4x4 Autocar, 5-6-ton 4x4 Mack, 1½-ton 4x4 Chev.

### TRAILERS

#### TRAILER, ¼-TON, PAYLOAD, 2-WHEEL CARGO (BANTAM WILLYS)

SNL's  
G-529, OSPE (14 Oct. 43).

TM's  
10-1281, Parts and maintenance.

#### TRAILER, 1-TON, 2-WHEEL CARGO

SNL's  
G-518, OSPE (3 Dec. 43).

G-518, OSPE, Vol. 1, C1 (28 Sept. 43).  
G-518, OSPE, LAP (4 May 43).  
TM's  
9-883, Operation, maintenance.  
9-883A, Organizational maintenance.

**TRAILER, 6-TON, T23 E2 HOBBS**  
SNL's  
G-119, OSPE (22 April 43).  
TM's  
10-1409, Maintenance and parts list.

**TRAILER, 4-WHEEL, MODEL T-15**  
TM's  
10-1429, Maintenance manual and parts price list.

**TRAILER, 5 TO 6-TON, PAYLOAD, 4-WHEEL CARGO (HOBBS)**  
SNL's  
G-537, LAP (11 June 43).

**TRAILER, ATHEY, 6-TON AND 20-TON**  
SNL's  
G-123, OSPE, Vol. 1 and 2 (23 Nov. 43).

**TRAILER, ARMOR, M8**  
SNL's  
G-157, OSPE (5 Aug. 43).  
G-157, OSPE, List of all parts (7 May 43).  
G157, OSPE, C1

**TRAILER, TRUCK, 45-TON TANK TRANSPORTER, M19**  
SNL's  
G-159, OSPE (16 June 43).  
TM's  
10-1242, Combined Maintenance manual and parts list.

**TRUCK, TRAILER, 40-TON TANK RECOVERY, M25**  
SNL's  
G-160, OSPE (29 Oct. 43).  
G-160, OSPE, C1 (17 Aug. 43).

**TRAILER, WATER TANK, 250 GAL., 1-TON**  
SNL's  
G-527, OSPE (27 Sept. 43).  
TB's  
883, A1, Steel landing wheel assy.

**TRAILER, BOMB LIFT, M5**  
OFSB's  
6-G74, Lubrication instructions.  
SNL's  
G-74, OSPE.  
G-74, OSPE, C1 (23 July 43).  
G-74, OSPE, Part 2, SPC (10 Sept. 43).

**TRAILER, 2-WHEEL, VAN BODY**  
TM's  
10-2116 Maintenance manual.

### SEMI-TRAILERS

**SEMI-TRAILER, 2-TON PAYLOAD, 4-TON GROSS (MILLER)**  
SNL's  
G-559, OSPE (16 June 43).

**SEMI-TRAILER, 2½-TON, PAYLOAD 6½ TON GROSS, 4-WHEEL**  
SNL's  
G-661, OSPE (28 Sept. 43).

**SEMI-TRAILER, 3½-TON, PAYLOAD 6 TON GROSS STAKE AND PLATFORM (BLACK DIAMOND)**  
SNL's  
G-530, LAP, C1 (8 July 43).

**SEMI-TRAILER, 6 TON PAYLOAD (HIGHWAY)**  
SNL's  
G-525, OSPE (28 April 43).

**SEMI-TRAILER, 6-TON (BLACK DIAMOND)**  
TM's  
9-886A, Organizational maintenance.

**SEMI-TRAILER, 6 TON GROSS (GERSTENLARGER)**  
SNL's  
G-569, OSPE, C1.

**TRAILER, TRACTOR, CRANE, M6 (T26) 4-TON**  
SNL's  
G-117, OSPE (7 Sept. 43).

**SEMI-TRAILER, 7 TON PAYLOAD, 2-WHEEL (CARTER)**  
TM's  
10-1440, Combined maintenance manual and parts list. (Model C11-691)

**SEMI-TRAILER, CARGO, 7 TON PAYLOAD (10 TON GROSS)**  
SNL's  
G-544, OSPE (21 Aug. 43).  
G-544, SPC (25 Sept. 43).

TM's  
9-882, Organizational maintenance  
**SEMI-TRAILER, M15**  
SNL's  
G-160 Part 2, SPC (15 Aug. 43).

### SEMI-TRAILERS (SPECIAL PURPOSE)

**SEMI-TRAILER, REFRIGERATION UNIT**  
TM's  
10-1614, Combined operation and maintenance manual and parts list.

**SEMI-TRAILER, REFRIGERATOR, 6-TON (THERMO KING)**  
TM's  
10-1471, Maintenance manual (1 Aug. 43).

**SEMI-TRAILER, REFRIGERATION, 10-TON GROSS (GRAMM)**  
TM's  
10-1609, Maintenance manual (22 Sept. 43)

**SEMI-TRAILER, STERILIZATION AND BATH, 6-TON (10 TON GROSS) MODEL M5B**  
TM's  
10-641, Operational spare parts  
10-1397, Combined operation and maintenance manual and parts list.

### MISCELLANEOUS VEHICLES

**MOTORCYCLE, CHAIN DRIVE, AND SHAFT DRIVE (HARLEY-DAVIDSON)**  
SNL's  
G-523 OSPE (23 Sept. 43).  
G-523, OSPE, C1 (9 Nov. 43).

TB's  
879-1, Interchangeable rear drive chain.  
TM's  
10-1350, Parts list.

**MOTORCYCLE, CHAIN DRIVE, SOLO (INDIAN)**  
SNL's  
G-524, OSPE (16 June 43).  
TB's  
879-1, Interchangeability of rear drive chains.

**BICYCLES, ALL TYPES**  
SNL's  
G-519, OSPE (11 Aug. 43).  
G-519, OSPE, Vol. 1, Parts list (6 Jan. 43).

**BICYCLE, COLUMBIA, MF & MG**  
SNL's  
G-519, OSPE, Vol. 1 (6 Jan. 43).

**BICYCLE MOTOR (SERVICYCLE SIMPLEX G-A-1)**  
SNL's  
G-611, OSPE (16 June 43).

**SCOOTERS, MOTOR, W/SIDE CAR**  
SNL's  
G-551, OSPE (17 Aug. 43).

**CAR, PASSENGER, LIGHT SEDAN, 4-DOOR (CHEVROLET)**  
SNL's  
G-520, OSPE (10 Aug. 43).

**CAR, PASSENGER, 1941-42-43 (CHEVROLET)**  
SNL's  
G-654, Master Parts book, SPC (5 Nov. 43).

**CAR, 5-PASSENGER SEDAN, 6-8 CYLINDER (FORD)**  
TB's  
10-1375A, Nomenclature plate change.

### GENERAL

**GENERAL MAINTENANCE**  
AR's  
850-15, Military Motor vehicles forms, records, reports.  
850-15, C1 (25 Nov. 43).  
850-15, C2 (26 Nov. 43)  
FSMWO's  
G1-W6, Blackout driving light.  
G1-W9, Change to new style combat zone safety lights.

OFSB's  
4-1, Maintenance, general.  
4-5, Modification of ordnance material.  
4-16, C1, Recoverable automotive items.  
4-17, Serviceability standards for overseas shipment.  
4-17, C3, Serviceability standards for overseas shipment.  
6-1, Ordnance lubrication program.  
6-G-2, C1, Lubricating oil requirements for diesel vehicles.

SNL's  
G-1, Major item of automotive and semiautomotive vehicles (9 June 43).  
G-1, Major item, C1 (9 June 43).  
G-9, Vol. 1, Parts interchangeability and cross references.  
G-27, Vol. 1, C2, Maintenance tools (15 Nov. 43)  
G-27, Vol. 2, Tools (1 Oct. 43)  
G-175, Special tools for combat vehicles (1 March 43).

H-1, C1, Standard hardware (26 March 42).  
H-2, C2, Miscellaneous hardware (26 Aug. 38).  
H-7, C1, Pipe tubing and hose (22 Dec. 41).  
H-8, C1, Miscellaneous piece material (1 Jan. 37).  
H-12, Antifriction bearings and related materials (6 Jan. 43).

J-2, C1, Cutting, boring and tweezer tools (13 Jan. 38).  
K-1, C1, Cleaning, preserving and lubricating material (1 Nov. 43).  
K-2, C2, Soldering, brazing and welding material (1 Nov. 43).  
M-1, Electrical apparatus units and parts (24 June 43).

M-3, Miscellaneous accessory units and parts (9 Feb. 43).  
N-3, Tool set unit equipment, special for posts, camps and stations (14 June 37).  
N-17, C1, Tool set unit equipment, special for posts, camps, and stations (25 Aug. 43).  
N-19, C1, Tool sets, motor transport (20 April 43).

WDC's  
231, Automotive disability report.  
248, Ordnance material distribution of FSMWO's, TB's.  
267, Complaints on fuel and lubricants.

### PREVENTIVE MAINTENANCE

OFSB's  
6-11, Cold weather lubrication and service of combat and automotive vehicles

OFSB's  
28, Bearing balls, and rollers: instruction charts.

TB's  
700-101, Senior military standard base-mounted oil filter leakage.

700-42, Steering knuckle arm ball failure.  
700-43, 1st-echelon spare parts kit.

700-56, Correcting windshield defroster switch, short circuit.  
700-58, Mounting decontaminating apparatus M2.

700-71, Sealing of bolted and riveted joints.  
700-73, Combat vehicles engine crankcase drain periods.

700-76, Engines, gasoline and diesel, oil filter replacement elements.

700-84, Ordnance wheeled vehicles lubricant passage for universal joint trunnion ends.

766-1, Trucks, painting inside surfaces of rear door.  
801-3, 2nd-echelon tool sets.

850-10, Addition of gum solvents in lubricants and motor fuels forbidden.  
10-1206-1, Grease gun adapter.

2835-1, Fuel, lubricants, cleaner and preservatives.

TC's  
27 (1943), Rescinding of TC-27 (1943) on "Publications covering lubrication of Ordnance material."

45 (1943), Spark test for location of field wiring insulation faults.

54 (1943), Placing of caution tags in drivers' compartments (see TB 700-36).  
68 (1943), Approved list of universal gear lubricants, greases, and engine lubricating oil.

TM's  
5-267, Supplement 3, 4 and 5 camouflage.  
9-244, Machine gun mounts to trucks.

9-1799, Fire extinguishers.  
10-460, C1, Reducing strainers on winch rig.

10-1190, Master parts list Dodge trucks (1 Jan. 40-1 Jan. 42)  
10-1213, Operational Maintenance manual and parts list, Carter trailer built for USA—6-ton semi-trailer, 2-wheel textile repair equipment van.

31-200, Maintenance and care of pneumatic tires and rubber treads.

38-250, Basic Maintenance manual.  
38-305, Corrosion prevention.

WDC's  
54, New Authority (1943).

- 198, Container markings, petroleum products.  
 202, Rescind WDC 384 (1943) series on tire conservation.  
 211, Publication covering lubrication of Ordnance material.  
 297, Change in terminology from "Maintenance factor to Replacement factor."  
 300, Emergency diesel fuel.  
 321 (1943), Abuse of air-cooled engines in compressor.

#### TOOLS

- FSMWO's  
 G27-W1, To modify bogie lift.  
 G27-W2, Maintenance tools.  
 OFSB's  
 2-15, Depot supply of Ordnance parts and tools.  
 SNL's  
 G-19, Interchangeability chart of organizational special tools for combat vehicles (8 July 43).  
 G-27, Tools, maintenance for repair of automotive vehicles (5 Oct. 43).  
 G-27, Vol. 2, C4, Tools, maintenance for repair of automotive vehicles (15 Oct. 43).  
 G-175, Suppl. 1, Special tools for combat vehicles (5 April 43).  
 J-2, C2, Cutting, boring and tweezer tools (13 Jan. 38).  
 N-8, Tool sets motor transport (20 April 43).  
 N-19, Tool sets motor transport (20 April 43).  
 N-19, C2, Tool sets motor transport (20 April 43).  
 N-23 (including C1), Tool sets, unit equipment for post, camps, and stations (16 June 43).  
 M-5-C1, Miscellaneous chests, kits, racks, tool rolls (17 May 43).

- TB's  
 801-3, Installation of 2nd-echelon tool sets.

#### OPERATIONS

- AR's  
 850-15, Military motor vehicles (accident claims).  
 FM's  
 2-30, Cavalry mechanized reconnaissance squadron.  
 5-21, C1, Obscuring of national symbol (8 Oct. 43).  
 17-67, Crew drill and Service of the Piece Medium Tank M4.  
 21-6, List of publications for training (1 July 43).  
 55-150, Amphibian truck company (11 Oct. 43).  
 7-C2, Policy for supply of organizational spare parts and equipment.  
 TB's  
 700-38, Descending steep grades in tank or full track gun carriages.  
 700-103, Elimination of spare tire locks.  
 850-12, Water proofing canvas and duck used for tarpaulins, tops, curtains, etc.  
 TC's  
 51 (1943), Use of paint, liquid vesicant detector, M5 on helmets and vehicles.  
 54 (1943), Placing of caution tags in drivers' compartment (see TB 700-36).  
 59 (1943), Descending steep grades (Medium tanks).  
 62 (1943), Passage of mine fields.  
 107 Employment of cavalry units.  
 TM's  
 5-267, C1, Supplement 2, Obscuring national symbol (8 Oct. 43).

- 9-2800, Standard military motor vehicles (1 Sept. 43).  
 38-205, Army supply procedure parts 1 & 2 (21 Oct. 43).  
 WDC's  
 80 (1943), Furnishing transportation to certain government and other personnel.  
 86 (1943) Operation of track laying vehicles limited.  
 102 (1943), Movement of troops within continental US (Motor, rail and air).  
 307 Army supply procedure (23 Nov. 43).  
 312 Standardization of motor vehicles (30 Nov. 43).  
 325 Use of property issue (WD AGO Form 446) for issuance of motor vehicle parts (14 Dec. 43).  
 109, Movements of units within continental US.

#### ADMINISTRATION

- AGO's  
 Form 432, Tank, and combat vehicle status report.  
 AR's  
 25-25, Claims for damage.  
 25-20, Claims, investigation of accidents (3 July 43).  
 25-40, Claims for damage to or loss or destruction of property, incident to the training practice, operation or Maintenance of the Army.  
 25-220, Claims in favor of US for damage to or loss or destruction of government property and loss sustained by or on account of injury or death to government personnel.  
 35-6620, C4 and C5, Expendable property (8 Dec. 43).  
 310-60 T/OE and other publications.  
 310-200 Military publications, allowances and distribution.  
 310-200, C2, Allowances and distributions of Military publications.  
 850-5, C7, Marking of clothing, equipment, vehicles and property.  
 850-5, C8 (8 Oct. 43).  
 850-15, Motor vehicles (revised 28 Aug. 43).  
 850-15, C2, Military Motor vehicles (Vehicle density report).  
 850-15, C3, Military motor vehicles (forms records and reports).  
 850-15, C4, Military vehicles (accident claims).  
 850-25, C2, Development, classification of and specification for types of equipment (4 Dec. 43).  
 FM's  
 9-5, C1, Ordnance service in the field.  
 9-10, C1, Ordnance field Maintenance.  
 17-67, Crew drill and Service of the Piece Medical Tank M4.  
 OFSB's  
 1-1, Index to Ordnance publications (in 2 volumes). Index to technical publications for Ordnance. Index to technical and publications, Administrative.  
 1-8, C1, Publications for Ordnancemen.  
 2-19, Shipment damaged in hands of carrier.  
 4-9, C4, Special instructions group "G" material (Rescinds OFSB 4-9).  
 5-8 Removal of vehicles from service.  
 OFSC's  
 4, C1, Chevrolet field representatives.

- 27 Ordnance technical vehicles.  
 29, Final Ordnance field service circular.

#### SNL's

- G-1, Major items of automotive and semiautomotive vehicles (8 June 43).  
 OGS, 7-1, Obsolete group G material.  
 OGS, 7-1, C1, Obsolete group G material.

#### TB's

- 700-68, Ordnance vehicles, instrument panel voltmeter.

#### TM's

- 5-267, Camouflage—Supplement 3  
 9-1799, Fire extinguishers.  
 9-2800, Standard Military vehicles  
 12-255, C1, Check list of records for overseas service.  
 38-220, Stock control manual for posts, camps and stations (with C1).

#### T/O—T/E's

- 9-7, 3/1/43, Personnel and equipment for Ordnance medium Maintenance company.  
 9-8, 3/1/43, Personnel and equipment for Ordnance light maintenance company, infantry division.  
 9-25, 2/14/43, Personnel and equipment for Ordnance maintenance company, Air Force.

#### WD-AGO's

- Form 461, Work sheet for wheeled and half-track vehicles.  
 Form 462, Work sheet for full-track and tank-like wheeled vehicles.  
 Form 463, Work sheet for motorcycles.  
 29 (1944) Engineering changes and modification, Ltd.  
 329 (1943), Preparation of operator's permit (WD AGO Form 7360) for overseas movement.  
 39 (1944), Simplified property accounting procedure.  
 86, 111, 122, 125 (1943), Tire and tube purchase, storage, and issue and inventory.  
 119 (1943), Motor vehicle driver and mechanic award authorized for instructors.  
 124 (1943), Responsibility for modification of Ordnance material.  
 114 (1943), Automotive disability report change in procedure.  
 180 (1943), Chart of responsibilities under AR 850-15.  
 189 (1943), Movement of units within continental U. S.  
 207 (1943), Motor transport responsibilities.  
 210 (1943), Motor transport responsibilities.  
 225 (1943), Changes to tables of equipment.  
 230 (1943), Chart of responsibilities under AR 850-15.  
 231 (1943), Automotive disability report.  
 246, Definition of terms pertaining to maintenance repair and salvage property.  
 248, Ordnance material distribution of FSMWO's and TB's  
 252, Civilian automotive advisors.  
 253, Automotive disability report.  
 263, Publication of War Department Pamphlets.  
 264, Use of government vehicles.  
 283, Enlisted men; Requisition for replacement trained by Army ground forces.  
 295, Revised procedure for accounting for discrepancies in shipment.  
 296, Automotive disability report.  
 281, Camouflage Distribution of engineer nets.

- 285, Supply of administrative vehicles.

#### TRAINING

- AR's  
 310-200, Military publications allowances and distribution.  
 IOC's  
 Introduction to the Ordnance Catalog.  
 FM's  
 21-6, List of publications for training.  
 MTP's  
 3-2, Chemical Warfare Training program for Chemical Warfare Service Units, Individuals training.  
 3-4, Chemical warfare unit training program for Chemical Warfare service units.  
 3-5, Chemical Warfare Mobilization Training program for enlisted replacements of Chemical Warfare replacement Training Centers.  
 5-2, Engineer Mobilization training program for engineer replacement at engineer replacement training centers.  
 5-3, Unit Training Program for ASF Engineer Units.  
 8-6, Training Program for Revised ROTC training program for Medical Army specialized training Units.  
 9-10, Ordnance Tire repair company.  
 9-11, Ordnance department mobilization training program for Ordnance Bomb disposal company.  
 10-2, QM mobilization training program for QM replacement at QM replacement training centers.  
 10-3, Unit training program for QM units of the Army Service Forces.  
 11-2, Signal Corp mobilization training for enlisted replacement centers.  
 11-4, Signal corps unit training program for Signal Corps units.  
 14-3, Unit Training program for Finance Dept.  
 19-1, Military Police Mobilization Training Program for M.P. units.  
 19-2, Military Police Mobilization Training program for replacement at M.P. replacement Training centers.  
 55-3, Unit training program for Transportation corps Port Battalions and companies.  
 55-4, Transportation corps mobilization training program for Headquarters and HQ Company regulation Station.  
 55-5, Transportation corps mobilization training program for Port Headquarters and HQ company.  
 OFSB's  
 1-1, Index to technical and administrative publications.  
 1-8, Publications for the Ordnancemen.  
 6-C1, Distribution of Ordnance Field Service Publication series of 1943.  
 OFSC's  
 1-(1943) C2, List of OFSC's, TB's 10, Index to TB's.  
 OSPI  
 Ordnance publication supply index.  
 TB's  
 106 List of Films.  
 TC's  
 1 (1944), List of Publications.

- 7 (1944), Load classification and marking of bridges and Military vehicles.
- 27 (1943), Establishing TM 21-300 as official guide for selection and training of drivers pending revision FM 25-10.
- 39 (1943), Film strips and bulletins.
- 57 (1943), Film strips and bulletins (add FM 21-7).
- 58 (1943), List of Publication (add FM 21-6).
- 73-85 (1943), List of sound training films, film strips and film bulletins (add to FM 21-7, 1943).
- 78 (1943), List of publications add to FM 21-6).
- 104 (1943), List of Publications.
- 111 (1943), List of Publications.
- 112 (1943), List of Films.
- 115 (1943), List of Publications.
- 116 (1943), List of Films.
- 117 (1943), Marking of bridges and vehicles.
- 122 (1943), Mine field marking.
- 125 (1943), Employment of tanks and tank destroyers as artillery.
- 128 (1943), List of Films.
- 129 (1943), List of Publications.
- 131 (1943), Recognition, training aids.
- 133 (1943), List of Films (27 Dec. 43).

#### TM's

- 31-200 (revised), Maintenance and care of Pneumatic tires and rubber treads.

#### WDC's

- 119 (1943), Motor vehicle driver Mechanic award authorized for instructors.
- 177 (1943), Exemption of training film and strips from property account ability.

### ORGANIZATION AND EQUIPMENT

#### OEC's

- 3-C1, CWS units.
- 5-35 (tent), Engineer Bn.
- 5-95, Engineer Camouflage Bn Aviation.
- 5-115 (tent), Engineer Squadron.
- 5-125, C1, Engineer Ry. Operation Bn.
- 5-215, C1 (tent), Armored Engineer Bn.
- 5-235, C1 (tent), Engineer Mountain Bn.
- 5-251 (tent), Engineer Special Service Regt.
- 5-510 (tent), Engineer Amphibian Brig.
- 5-511 (tent) (including C1, C2), Eng. Boat Regt.
- 5-21 (tent) (including C1), Eng. Shore Regt.

- 6-200 (tent), Divisional Artillery Airborne
- 7-11, Inf. Regt.
- 7-51, Inf. Glider Regt.
- 7-415 (including C2), Air base security Bn.

- 8-C1 (tent) Medical Bn. Engineer Amphibian Brig.

- 10 (tent), QM Units including series 6-7.
- 10-115, C1 (tent), QM Squadron Cav. Division.
- 10-275, QM Bn. Engineer Amphibian Brig.

- 11-C1, Signal Units.
- 11-15, C1, Signal Bn.
- 12-327, AG Machine records Unit.
- 71 Inf. Airborne Division.
- 4-275, Antiaircraft Bn. Airborne Div.

#### TB's

- 700-43, 1st-echelon spare parts kit.

#### T/E

- 11-287, Sig. Depot Co. Aviation (3 Jan. 43).
- 20-42, Headquarters Company replacement depot (18 Feb. 43).
- 6-36, Headquarters and service Btry, Motorized F.A. Bn, Medium truck drawn (3 Jan. 43).

#### T/O—T/E

- 2-27, Recon. Training (Co.) Mechanic (Armored) (1 March 43).
- 5-17, Engineer Combat company (Training) (1 March 43).
- 5-16, Headquarters and Headquarters and Service Co. Engineer Combat Bn. (1 March 43).
- 5-397, Engineer gas generating unit (22 Feb. 43).
- 6-10-1, Headquarters and Headquarters Btry. Artillery Inf. Ordnance Motorized Division (1 March 43).
- 6-27, F.A. Btry Motorized 105 MM How. Truck drawn (4 March 43).

- 6-26, Headquarters and Headquarters and Service Btry. Motorized F.A. Bn (4 March 43).

- 6-37, T.A. Btry. Motorized 155 MM How. truck drawn (4 March 43).

- 7-12, Headquarters and Headquarters company Inf. regt. (4 March 43).

- 7-13, Service company Inf. Regt. (4 March 43).

- 7-18, Inf. Heavy Weapons Co. (4 March 43).

- 7-16, Headquarters and Headquarters Company Inf. Bn. (4 March 43).

- 7-18, Inf. Heavy Weapons Co. (4 March 43).

- 7-117, Inf. Antitank company (4 March 43).

- 11-7, Signal Co. Inf. Div. (1 March 43).

- 19-7, M.P. Platoon Inf. Division (1 March 43).

- 44-26, Headquarter and Headquarters Btry Antiaircraft Artillery automatic weapons Bn. Mobile (27 Feb. 43).

- 44-13B, Antiaircraft Artillery search light Btry. Semi-Mobile (27 Feb. 43).

- 44-27, Antiaircraft Artillery automatic weapons Btry. Mobile (27 Feb. 43).

- 44-126, Headquarters and Headquarters Btry. Antiaircraft. Artillery automatic weapons Bn. Semi-mobile.

- 44-136, Headquarters and Headquarters Btry. Antiaircraft Artillery search light Bn. Semi-mobile (27 Feb. 43).

#### T/O's

- 8-447, Medical air evacuation Transportation Squadron (15 Feb. 43).

#### WDC's

- 260, Controlled items of equipment.

### STORAGE, SHIPMENT AND ISSUE

#### AR's

- 35-6520, C1, Property Accountability and responsibility.

- 35-6560, C3, Receipt shipment and issue of property.

- 850-14, C3, Military Motor vehicles (forms, records, reports).

- 850-20, C1, Precaution in handling gasoline (Non-sparking shoes).

- 700-10, C2, Storage and issue.

- 705-5, Stock control.

#### IOC's

- Introduction to the Ordnance catalogue.

#### OEC's

- 3-CWS, Units.
- 4-55 (tent), CA Btry. 155 MM gun Mobile.

- 4-195 (tent), CA Bn. Sep., Automotive weapons.

- 5 (tent), C1, Engineer Units.
- 5-75 (tent), Engineer Motorized Bn.

- 5-125, Engineer Ry Operating Bn.
- 5-171 (tent), Engineer Combat Regt.

- 5-215, Armored Engineer Bn.
- 5-411, Engineer Regt. Aviation.

- 6-165, F.A. Bn Armored Division.
- 7-415 (tent), C1, Air base security Bn.

- 8-195 Medical Bn. Engineer Amphibian Brigade

- 10-51 QM Truck regt.
- 10-75 (tent), QM Sterilization Bn.

- 11-335 (tent), C1, Signal Bn. Ground Air support command.

#### OFSB's

- 2-2, Shipping tickets.
- 2-15, Depot supply of Ordnance parts and tools.

- 2-16, C1, Storage and shipment of rubber tires, tubes and camelback.

- 2-17, Receiving and pre-issue inspection of vehicles.

- 2-18, Requisition and issue of spare parts, equipment and supplies.

- 2-19, Shipments damaged in hands of carriers.

- 2-20, Deletion of "Y" symbol in SNL's.

- 3-18, General supply, requisition and issue of spare parts equipment and supplies.

- 4-17, Serviceability standards for overseas shipment.

- 6-2, Product guide.

- 4-24, Protection of Ordnance materiel in open storage.

#### OFSC's

- 15-C1, Preparation and distribution of shipping tickets.

- 15-C3, Shipping tickets.

#### OPSI's

- Up-to-date listing of SNL's SAL's SR's and OSSC's (1 Feb. 43).

#### SNL's

- G-1, Suppl. Vehicular armament and mounts (28 Oct. 43). Major items of automotive and semiautomotive vehicles.

- G-9, Vol. 1, Parts interchangeability and cross reference.

- G-659, Master parts list (Studebaker).

- H-6, C1, Pipe and hose fittings (4 Oct. 43).

- H-7, C1, Pipe tube and hose (22 Dec. 41).

- H-12, Antifriction bearings and related items (6 Jan. 43).

- J-2, C1, Cleaning, preserving and lubricating materials (13 Jan. 38)

- K-1, C4, Cleaning, preserving and lubricating materials (1 Nov. 42).

- K-1, C2, Cleaning, preserving and lubricating materials (1 Nov. 42).

- K-2, Soldering, brazing and welding materials (1 Nov. 43).

- K-2, C3, Soldering, brazing and welding materials (1 Nov. 43).

- M-3, Miscellaneous accessory units and parts (9 Feb. 43).

- M-8, Chests, kits, racks and tool rolls (17 May 43).

- N-17, C1, Tool sets unit equipment special for posts,

- camp and stations (25 Aug. 43).

- N-19, Tool sets motor transports (29 Oct. 43).

- N-19, C1, Tool sets Motor transport.

- N-19, C2, Tool sets Motor transport.

- N-23, Tool sets, unit equipment special for posts, camps and stations.

- OGS-7-1, Obsolete group G Material.

- OGS-7-1, C1, Obsolete group G material.

#### TB's

- 700-43, 1st-echelon spare parts kit.

#### TM's

- 9-2800 Standard military motor vehicles.

- 10-1199, Master parts list, Dodge trucks (1 Jan. 40), (1 Jan. 42).

- 38-220, Stock control manual for posts, camps and stations.

- 38-220, Stock control manual for posts, camps and stations (with C1).

#### WDC's

- 35- (1944), Responsibility for maintenance, storage, and issue of material; handling equipment.

- 76 (1943), Revised procedure for distribution of shipping tickets and for accounting for discrepancies in shipment.

- 86 (1943), Authorization in Chief of Ordnance of Purchase storage and issue and inventory control of replacement tires, tubes and their component parts.

- 98 (1943), Responsibility for procurement, maintenance, storage and issue of gasoline nozzles.

- 101 (1943), Simplified inventory adjustment procedure.

- 108 (1943), Revised procedure for distribution of shipping tickets.

- 177, Local purchase.

- 182, Discrepancies in shipment.

- 192, Obsolete SNL's.

- 198, Container markings—Petroleum Products.

- 209, Local purchase.

- 215, Local purchase.

- 220, Supply of overseas command.

- 247, Tire and tube procurement, storage, issue and inventory control.

### SALVAGE AND RECLAMATION

- AR's

- 35-6640, C6, Lost, destroyed, damaged or unserviceable property.

- OFSB's

- 4-19, Maintenance reclamation of automotive material.

- OFSC

- 24 (1943), Disposition of scrap rubber.

- 24 (1943) C1, Disposition of scrap rubber.

- WDC's

- 7 (1944), Replacement and disposition of unserviceable property.

- 75 (1943), Disposal of unserviceable property.

- 268 (1943), Tires and tubes issue, use and reclamation of "seconds."

### TACTICAL PROBLEMS

- TC's

- 5 & 18 (1943), Destruction of Ordnance materiel in hands of Ordnance troops in event of imminent capture.

- 34 (1943), Installation of "booby traps" in abandoned materiel.